

**GOVERNMENT OF MIZORAM
AGRICULTURE & FARMERS' WELFARE DEPARTMENT
MIZORAM:AIZAWL**



TENDER DOCUMENT

NIT No.EE/AGR-AE/24/02(WIF)

GROUP NO.	:	B
NAME OF WORK	:	Construction of Warehouse with Associated Infrastructure at Sangau, Lawngtlai District.
ESTIMATED COST PUT TO TENDER :		<i>Rs. 94,72,400.00 (Rupees ninety four lakh seventy two thousand four hundred) only.</i>

PRESS TENDER NOTICE
NOTICE INVITING TENDER

NIT No.EE/AGR-AE/24/02(WIF) Dt. 04/12/2024

On behalf of the Governor of Mizoram, the undersigned invites sealed item rate tender from eligible class of Contractor of Mizoram PWD/Government Empaneled Firms for the following work(s):-

Gr. No.	Name of Work & Location	Estimated Cost put to Tender (Rs.)	Earnest Money (2%) (Rs.)	Cost of Tender Document (Rs.)	Time of Completion
A.	Construction of Warehouse with Associated Infrastructure at Buarpui, Lunglei District.	94,72,300	1,89,446	1,500	12 Months
B.	Construction of Warehouse with Associated Infrastructure at Sangau, Lawngtlai District.	94,72,400.	1,89,448	1,500	12 Months
C.	Construction of Warehouse with Associated Infrastructure at Sialsuk, Aizawl District.	94,72,400	1,89,448	1,500	12 Months
D.	Construction of Warehouse with Associated Infrastructure at Zawlnuam, Mamit District.	92,92,900	1,85,858	1,500	12 Months
E.	Construction of Warehouse with Associated Infrastructure at Thingdawl, Kolasib District.	92,92,800	1,85,856	1,500	12 Months

Tender Document may be obtained from the Directorate of Agriculture & Farmers' Welfare, Engineering Branch, Aizawl during office hours from **09/12/2024** on payment of prescribed cost (Non-Refundable) and Directorate of Agriculture & Farmers' Welfare website (<https://agriculturemizoram.nic.in/downloads.html>). The tender will be received in the office of the undersigned up to **12:00 PM on 14/01/2025** and the same will be opened on the same day at **1:00 PM**.



(RAMDINLIANI)
Director of Agriculture & Farmers' Welfare,
Mizoram:Aizawl.

TABLE OF CONTENT

Sl. No.	CONTENTS	Page No.
1	Press Tender Notice	1
2	Table of Content	2
3	Notice Inviting Tender	3-5
4	Purchase receipt of tender document	6
5	Section – I : Instruction to Bidders (ITB)	7-9
6	Section – II : General conditions of contract	10-14
7	Section – III : Special conditions for contractor	15
8	Section – IV : General specifications	16
9	Information on Bid Capacity (<i>Annexure – I</i>)	17
10	Declaration of Tenderer (<i>Annexure – II</i>)	18
11	Form of Financial Bid (<i>Annexure – III</i>)	19
12	BOQ and Drawing	20

**GOVERNMENT OF MIZORAM
DIRECTORATE OF AGRICULTURE AND FARMERS' WELFARE
MIZORAM:AIZAWL**

Telefax :0389-2322511

Tele :0389-2322437

email:agrimizoram@gmail.com

website:www.agriculturemizoram.in.nic

No.G.27031/2/2023-DTE(AGR-AE)/Vol.IV

:

Aizawl, the 4th of December, 2024.

NOTICE INVITING TENDER
NIT No.EE/AGR-AE/24/02(WIF) Dt. 04/12/2024

On behalf of the Governor of Mizoram, the undersigned invites sealed item rate tender from eligible class of Contractor of Mizoram PWD/Government Empaneled Firms for '**Construction of Warehouse at 5 (five) locations in Mizoram**' under NABARD-WIF as given below:-

Gr. No.	Name of Work & Location	Estimated Cost put to Tender (Rs.)	Earnest Money (2%) (Rs.)	Cost of Tender Document (Rs.)	Time of Completion
A.	Construction of Warehouse with Associated Infrastructure at Buarpui, Lunglei District.	94,72,300	1,89,446	1,500	12 Months
B.	Construction of Warehouse with Associated Infrastructure at Sangau, Lawngtlai District.	94,72,400.	1,89,448	1,500	12 Months
C.	Construction of Warehouse with Associated Infrastructure at Sialsuk, Aizawl District.	94,72,400	1,89,448	1,500	12 Months
D.	Construction of Warehouse with Associated Infrastructure at Zawlnuam, Mamit District.	92,92,900	1,85,858	1,500	12 Months
E.	Construction of Warehouse with Associated Infrastructure at Thingdawl, Kolasib District.	92,92,800	1,85,856	1,500	12 Months

TERMS AND CONDITIONS

1. The tenders are invited only from registered Contractor from Mizoram PWD of Class-IV & above and Government Empanel firms for Execution of Construction work. The enlistment of contractor should be valid on the last date of sale of tender. In case the last date of sale of tender is extended, the enlistment of contractor should be valid on the original last date of sale of tender.
2. Issue of tender forms will be stopped at **4:00 PM on 13/01/2025** and tender will be received up to **12:00 PM on 14/01/2025** and will be opened on the same date at **1:00 Pm.**
3. If for any unforeseen reason, the tenders could not be received & opened on the stipulated date & time, the same will be received and opened in the next working day at the same time for which no separate communication will be made.
4. Before tendering, the contractor shall have the right to inspect the site to fully acquaint himself/herself about the condition in regard to accessibility of site, nature and extend of ground working conditions including stocking of materials, installation of tools & plants etc., conditions affecting accommodation

and movement of labor etc., required for the satisfactory execution of the work contract. No claim whatsoever on such account shall be entertained by the Department in any circumstances.

5. Those Bidders who downloaded bidding documents from Department website must submit cost of Tender Document i.e., Rs. 1,500 in cash in separate envelope written with “**Cost of Tender documents**” and kept in the main envelope. **Purchased Receipt of tender document must be submitted.**
6. **Attested copy of Valid Contractor Registration Certificate** should be attached to the tender documents.
7. **Attested copy of Contractor GST Registration Certificate** should be attached to the tender documents.
8. For **Govt. Empanelled Firms**, **Attested copy of valid Govt. notification** should be attached to the Tender documents.
9. Tender must be accompanied with **Earnest Money (2% of the Estimated Cost put to tender) in the form of Call Deposit or Demand Draft or Banker Cheque of a Scheduled Bank issued in favour of the Director of A&FW Department, Mizoram; Aizawl.** The Earnest money must be kept in separate envelope marked as “**Earnest Money**” and then put in the main envelope.
10. The Bidder should have **qualified Engineers** in his pay roll (*with Affidavit notarized by notary public in Non-Judicial Stamp costing Rs. 10 that he is working or will be working under the bidder*) as given in the table below and List of such Engineers with names and experiences must be provided.

Sl. No.	Minimum qualification of technical representative	Discipline	Number
1.	Graduate engineer (Compulsory)	Civil/Agril. Engg	1
2.	Diploma engineer (if any)	Civil	1

Note: A retired Assistant Engineer from government service holding diploma will be treated at par with graduate engineers.

11. The Bidder should be **financially sound** and must be able to execute the contract as per the work program approved by the Department with his own resources without interruption in between payment of Running Bills. The **Bidder may provide any of the following documents** in order to show the financial soundness:
 - (i) Financial turn-over for the last consecutive three years should be equal or more than the Tender Amount (*prepared by Chartered Accountant*)
 - (ii) Bank Guarantee for at least 50% of the total estimated amount put to tender
 - (iii) Solvency Certificate issued by Scheduled Bank where Bidder has an account not less than Rs. 50.00 Lakh.
12. List of **mandatory machinery& tools** to be owned or leased by the contractor are as follow. Contractor has to list down the items with quantity, owned or leased and related documents must be furnished.

Sl. No.	Item Description	Quantity	Unit	Owned/Leased
1.	Concrete mixer of full bag capacity or more	1	No	
2.	Needle vibrator	1	No	
3.	Excavator	1	No	

Note: if Machineries are to be leased, the affidavit for leasing of machinery must be attached, notarized by notary public in Non-Judicial Stamp costing not less than Rs. 10.

13. Information on Bid Capacity (works for which Bids have been submitted and works which are yet to be completed) as on date of Bid must be provided as on **Annexure-I of the tender document.**
14. **Declaration of Tenderer**, notarized by notary public in Non-Judicial Stamp costing Rs. 20 must be submitted as per format given in **Annexure -II of tender document.**
15. The estimate is based on MPWD SOR 2022 for Rural Roads in Mizoram.
16. The estimated cost put to tender are inclusive of Cost Index and all taxes viz. GST, Cess, etc.
17. The Form of Financial Bid (**Annexure-III of tender document**) must be submitted, duly filled and attached in the front of Bill of Quantities (BOQ).
18. The Tenderer shall fill in rates and prices for all items of the works described in the BOQ.

19. Rate must be quoted both in figure and in words. The rate may be quoted **in decimal coinage but amount must be quoted in full rupees by ignoring up to fifty paisa and considering more than fifty paisa as rupees one.**
20. The Bidder should **sign with date** on both sides of each page of the BOQ
21. The Bidder is advised to thoroughly study Instruction to Bidder (ITB) of the tender document before submitting the bid.
22. The Bids should be kept in cover/envelope by super-scribing as **NIT No., Gr. No. and Name of Work and address to the Director of Agriculture & Farmers' Welfare Department, Mizoram, Aizawl and Name & Address of Bidders should also be clearly written at the bottom corner of the envelope**. The envelope/ cover should be sealed either with sealing wax or Cello-tape.
23. Each Bidder shall submit only one Bid, either individually, or as a proprietor, or as a partner in a partnership firm. A Bidder who submits or participates in more than one Bid for a particular work will cause the Bidder's participation to be disqualified.
24. The undersigned, on behalf of Governor of Mizoram, reserve the right to reject any or all of the tenders without assigning any reasons thereof and he does not bind himself for selection of the lowest tender.
25. Disagreement/failure of any or all of the required conditions mentioned above may entail disqualification of the tender.



(RAMDINLIANI)

Director of Agriculture & Farmers' Welfare,
Mizoram:Aizawl.

Memo No.G.27031/2/2023-DTE(AGR-AE)/Vol.IV

:

Aizawl, the 4th of December, 2024.

Copy to-

1. The P.S to Hon'ble Minister, A&FW Department for favor of kind information.
2. The Special Secretary to Govt. of Mizoram, A&FW Department for favor of kind information.
3. The Director, Information & Public Relation, Mizoram, Aizawl. He is requested to publish through 2 (two) leading Local Dailies in 2 (two) consecutive issues each (*as per enclosed*).
4. State Informatics Officer, NIC, Mizoram State Unit for favor of uploading in the Govt. of Mizoram website (*as per enclosed*).
5. Deputy Director i/c Extn, Directorate of A&FW Department for uploading on Department website along with tender document.
6. District Agriculture Officer, Aizawl/Lawngtlai/Lunglei/Mamit/Kolasib District, A&FW Department for information and to publish in DAO's Notice Board.
7. Notice Board.



(R. LALNUNZIRA)

Additional Director,
Agriculture & Farmers' Welfare Department,
Mizoram;Aizawl.

PURCHASE RECEIPT OF TENDER DOCUMENT

Item rate tender & contract for work

(A) Tender No. :

(B) Gr. No. & Name of work :

Issued to :

.....

Signature of officer issuing the document :

Designation :

Date of Issue :

SECTION-I: INSTRUCTION TO BIDDERS (ITB)

1. GENERAL

1.1 All information called for in the enclosed forms should be furnished against the relevant columns in the forms. If for any reasons, information furnished on a separate sheet, this fact should be mentioned against the relevant column. Even if no information is to be provided in a column, a 'nil' or 'no such case' entry should be made in that column. If any particulars/query is not applicable in case of the bidder, it should be stated as 'not applicable'. The bidder are cautioned that not giving complete information called for in the application forms or not giving it in clear terms or making any change in the prescribe forms or deliberately suppressing the information may result in the bid being summarily disqualified. Bids made by telegram or telefax and those received late will not be entertained.

1.2 Any information furnished by the bidder found to be incorrect either immediately or at later date, would render him liable to be debarred from tendering/taking up of work under Agriculture Department.

1.3 Canvassing directly or indirectly in connection with the Tender is strictly prohibited and the tender submitted by the contractor, who resort to canvassing will be liable to be rejected.

2. SUBMISSION OF TENDER

2.1 The Employer has adopted Single-part bids (one envelope) bidding process for selection of an eligible Contractor/Executing Agency for award of the work amongst the Bidders by the State Government. The Bidders must satisfy themselves that they are qualified to bid and should give an understanding to this effect. The Tender shall be prepared according to "Terms and Conditions" attached in the Tender Invitation and instructions given in this document.

2.2 The tender must submit within the time frame; no tender will be allowed to submit after closing the tender box.

2.3 The BOQ may be filled with hand-written or typewritten.

3. EXTENSION OF TENDER CLOSING

3.1 Employer may extend the deadline for submission of Tenders by issuing an amendment, in which case all rights and obligations of the Employer and the Tenderers previously subject to the original deadline will then be subject to the new deadline.

4. EXPENSES IN THE PREPARATION OF TENDER

4.1 The Tenderer shall be responsible for all expenses or loss incurred in the preparation and submission of his Tender.

5. TENDER PRICE/CONTRACT PRICE

5.1 The Tenderer shall fill in rates and prices for all items of the works described in the Bill of Quantities. Items for which no rate or price is entered by the Tenderer will not be paid when executed and shall be deemed covered by the other rates and prices in the Bill of Quantities (BOQ).

5.2 The tender price/contract price shall be estimated in Indian Rupees (Rs.). The contract price shall include all costs for the Work such as costs for transportation, risk, overhead, profit, tax and all other applicable charges. The Contractor shall not have right to claim any additional costs even due to price increase of any factors for the contracted work and for any other reasons.

5.3 The rates and prices quoted by the Tenderer shall not be subject to adjustment during the performance of the Contract.

5.4 The brief description of the items given in the Bill of Quantities in no way modifies or supersedes the detailed descriptions given in the Specifications for the full direction and description of the works and materials.

5.5 The quantities set forth in the Bill of Quantities are believed to be approximately correct, and represent substantially the Work to be carried out, and subject to the actual quantities.

5.6 Where there is a discrepancy between the rate in figures and words, the rates in words will govern.

5.7 Item for which no rate or price has been entered in will not be paid for by the Employer when executed and shall be deemed covered by the other rates and prices in the Bill of Quantities.

5.8 The rate quoted by the Bidder will be checked by using MS Excel sheet and where there is discrepancy between the checked amount and Bidder's quoted amount, the checked amount will govern.

6. TAXES AND RELATED CHARGES

6.1 The Government shall deduct TDS, etc. as admissible on the value of work done from each bill of the contractor as per prevailing government instruction/orders.

6.2 Labour Cess, Royalty Clearance etc as applicable shall be paid by the contractor himself. The Contractor shall quote his rate considering all such taxes.

6.3 All other taxes, levies, imposes, deductions, charges, fees and similar assessments whatsoever imposed, assessed, levied or collected by the Government of Republic of India, or any sub-divisions thereof or any taxing authority therein, upon the Contractor and his staff which not specified above shall be paid and/or borne by the Contractor.

7. TENDER VALIDITY

7.1 Tender shall remain valid for 90 days which will be started on the last date for submission of tender. The Employer may request that the Tenderers extend the period of validity for a specified additional period. The request and the Tenderers' response shall be made in writing. A Tenderer may refuse the request in which case he may withdraw his Tender without penalty. A Tenderer agreeing to the request will not be required or permitted to otherwise modify the Tender.

8. OPENING OF TENDER

8.1 All Tenderers who have submitted the Tender may attend the tender opening meeting, and the Tender Price of all the submitted Tenders will be informed to the Tenderers.

9. EVALUATION CRITERIA

9.1 The detailed submitted by the bidders will be evaluated in the following manner:

9.1.1 The eligibility for evaluation of financial bid is based on the criteria prescribed in the terms and conditions of the Notice Inviting Tender.

9.1.2 The financial bids of only those who qualified in all the eligibility prescribed in the tender documents will be evaluated by the Bid Evaluation Committee.

10. FORFEITURE OF EARNEST MONEY DEPOSIT (EMD)/BID SECURITY

The Bid security taken from a bidder shall forfeit in the following cases, namely;

- a) When bidder withdraws or modifies his bid after opening of bids.
- b) When the successful bidder fails to sign the contract in accordance with bidding document.
- c) When the successful bidder fails to deposit the Performance Security after 15 days of the issue of Letter of Acceptance (LoA).
- d) If the bidder make false declaration or providing false information for participation in tender process or to secure a contract.

11. CORRESPONDENCE

Correspondence related to the Work and the Contract shall be made in English and metric unit system unless otherwise approved by Employer. The correspondence to the Employer shall be addressed to:

Director of Agriculture & Farmers' Welfare Department,
Mizoram:Aizawl
796001

12. CORRIGENDUM/ADDENDUM

If found necessary, a Corrigendum and Addendum to the tender documents would be issued and would be put up on A&FW Department website for information of all contractors before the last date of submission of tender. Therefore, the Bidders are advise to frequent the Department website till the last date of submission of Bid. No other communication will be made.

13. AWARD OF CONTRACT

13.1 The employer reserves the right, without being liable for any damage or obligation to inform the bidder, to;

- (a) Amend the scope and value of contract to the bidder
- (b) Reject any or all the application without assigning any reason.

13.2 Any effort on the part of the bidder or his agent to exercise influence or to pressurize the employer would result in rejection of his bid. Canvassing of any kind is prohibited.

13.3 The Bid Evaluation Committee will be evaluated the bids based on the terms and conditions incorporated in the tender documents and the Bid Evaluation minutes will be prepared based on the Comparative statement and will be presented before the Works Advisory Board to recommend the most eligible bidder for award of the work.

13.4 As per Finance Department (Expenditure Control Branch) Notification No.H.11021/1/2024-FEC Dt. 15.07.2024, the permissible lower limit while considering tenders will be fixed at 5% below the estimated cost put to tender and the permissible upper ceiling is fixed at 10% above estimated cost put to tender. Hence, the Bidders are advising to stick with the notification while preparing the bidding documents.

13.5 After the Contract is negotiated, the successful Tenderer will be invited for the signing of the Contract.

13.6 Upon receipt of the signed agreement from the Tenderer, the Employer will, within seven (7) days notify the other Tenderer that their Tenders have been unsuccessful.

13.7 All the Earnest Money Deposited by the bidders shall be released immediately after finalization of the tender process and signing the Contract Agreement.

13.8 **Performance Security/Security deposit:** - Performance Security/Security Deposit shall be 10% of the contract amount. The selected contractor shall deposit 5% of contract amount within 15-days from the date of issue of Letter of Award (LoA) in favour of the Director of A&FW Department, Mizoram:Aizawl in the forms of **Deposit at Call/Call Deposit or Banker Cheque of a Scheduled Bank** and the other 5% of contract amount shall be deducted from the Final bill. The Performance Security shall be released after completion of defect liability period or remedying defects.

SECTION-II: GENERAL CONDITIONS OF THE CONTRACT

Part I: General Conditions of Contract

Article 1: Definitions and Interpretations

In the Contract, the following words and expressions shall have the meanings hereby assigned to them, except where the context otherwise requires:

- a) The term of “**Employer**” means the Director of A&FW Department, Mizoram, Aizawl.
- b) **Executing Agency** – means an agency appointed by the Employer for execution of works under the Project as may be defined in the agreement.
- c) The **Engineer-in-Charge** means the Executive Engineer as the case may be, who shall supervise and be in charge of the work.
- d) The term “**Contractor**” means any firm, company or other organization whose tender has been accepted by the “**Employer**”, and shall include the Contractor’s personnel, representatives, successors and assignors.
- e) The term of “**Supervisor**” means the person or persons appointed by the Engineer-in- Charge to supervise the Work on the Site and/or in other places where the Contractor’s activity must be carried out or is in process of being carried out, when necessary.
- f) The term of “**Contract**” means the written agreement between the Employer and the Contractor, and includes the Contract Agreement, the Conditions of the Contract, Terms and Conditions, Instruction to Tenderer, Bill of Quantities and the other documents annexed hereto or to be provided or approved by the Employer, and any other agreements between the Employer and the Contractor with respect to the Contract.
- g) The term of “**Work**” means all the works for the Project specified in the Contract to be performed by the Contractor.
- h) The term of “**Unit Price**” shall mean the unit price(s) stated in the Schedule of Quantities appended to the Contract.
- i) The term of “**Day, Week, Month, and Year**” means calendar day, calendar week, calendar month and calendar year.
- j) The term of “**Approval**” or “**approved**” means approval or approved and is given in writing by the Employer or the Engineer-in-Charge.
- k) **Cost of the Project** – means agreed tendered amount for execution of the Project

Article 2: Effective Date of Contract and Commencement Date of the Work

2.1 This Contract shall be effective on the date the Contract has been signed by the Employer and the Contractor.

2.2 The work must be commenced within 10 days after signing the contract agreement.

Article 3: Terms of Payment

- a) Advance Payment will not be entertained in any case.
- b) Payment will be made to the contractor in time on submission of bills based on progress of the work subject to availability of fund.
- a) Item for which no rate or price has been entered in BOQ will not be paid for by the Employer when executed and shall be deemed covered by the other rates and prices in the Bill of Quantities
- b) Payment of Contract Bill shall be made based on the actual on-site measurements of the major component of the works.
- c) Final Bill of the works shall be released to the Executing Agency/Contractor only after satisfactory completion of the Project/Work.
- d) Security Deposit i.e. 5% of Contract amount will be withheld from the final bill and shall be released after completion of defect liability period or after remedying defect if any.

Article 4: Variations and Omissions

- 4.1** The Contractor shall not alter any of the Work, except if ordered in writing by the Employer. The Employer shall have full power, during the execution of the Contract, to order the Contractor to alter, amend, omit, and/or otherwise change any of the Work, by notice in writing, and the Contractor shall carry out such variations.
- 4.2** If decrease in the Work is ordered by the Employer, this shall not constitute any grounds for claim for damage or loss of anticipated profits of the Work. All extra and additional works shall be performed in accordance with the terms of the Contract and with the same materials and workmanship as employed for the Work of similar character in the Contract, as far as they are applicable thereto.

Article 5: Force Majeure

- 5.1** If either party is temporarily unable by reason of force majeure or due to the laws or regulations of the Republic of India to perform any of its obligation under the Contract, and if such party gives to the other party written notice of the event within three (3) days after its occurrence, the party affected may be allowed to temporarily suspend the performance of his duties under the Contract for so long as a period as Force Majeure continues and as his performance is prevented thereby.
- 5.2** Neither party shall be liable to the other party for loss or damage sustained by such other party arising from any event referred to in Article 5.1 or delays arising from such event.
- 5.3** The term “Force Majeure” as employed herein means Act of God, strikes, lockouts or other industrial disturbances, acts of a public enemy, wars, blockades, earthquakes, storms, lightening, floods, washouts, civil disturbances, explosions, and any other similar events beyond the control of either party and which, by the exercise of due diligence, neither party is able to overcome.

Article 6: Time for Completion

- 6.1** The Contractor shall complete all the Works with satisfactory of the Employer within the date stipulated in the Contract Agreement.
- 6.2** The Contractor shall not be responsible for failure to carry out his obligations in case of force majeure such as those mentioned in Article 5, which should be notified by him in writing to the Employer within fourteen (14) days of the commencement of force majeure conditions. Depending on the submission of satisfactory evidence and if the existence of force majeure condition is accepted by the Employer, the Employer will grant extension of the Guaranteed Time for Completion of the Work sufficient to compensate for delay due to force majeure without penalty.
- 6.3** The Contractor shall commence the works on the commencement date and shall proceed expeditiously and without delay and shall complete the works within the time for completion.
- 6.4** In case of delay due to sole default on part of the Executing Agency, the Executing Agency shall be liable to pay to the employer compensation (not amounting to penalty) at the rate not exceeding 1/4th (one quarter percent) of the total anticipated Execution Agency charges per week of delay subject to maximum of 10% (ten percent) of the total Project Cost. However, the employer may reduce the same at its sole discretion.

Article 7: Delay in Completion

7.1 The Contractor should anticipate delay in completing the work within the specified contract time, the Contractor will be obliged to immediately notify and discuss the matter with the Employer. If in the opinion of the Employer the expected delay is due to provision of inadequate resources, the Employer may request the Contractor to employ additional personnel or use additional vehicles and equipment at the Contractor's expense.

7.2 If the work could not be completed in the stipulated period with a valid reason, the Employer may extend the working period.

Article 8: Suspension of the Work

The Contractor shall, on the written order of the Employer, suspend the progress of the Work or any part thereof for such time or times and in such manner as the Employer may consider necessary and shall during such suspension properly protect and secure the Work so far as is necessary in the opinion of the

Employer. All expenses incurred by the Contractor by reason of the suspension of the Work by the Employer will be the sole responsibility of the Contractor. The condition of such suspension is:

- (a) Provided in the Contract; or
- (b) Necessary for proper execution of the Work, or by reason of weather conditions affecting the safety or the quality of the Work or by some default on the part of the Contractor; or
- (c) Necessary for the safety of the Work or any part thereof.

Article 9: Defects Liability Period

9.1 The defect liability period is set at 12 months after the date of issue of a Certificate of Completion of the Works stipulated in the above.

9.2 Remedying Defects

The Employer may at any time within 12 months, from the date of completion of works notifying the Contractor of any defects or outstanding works. The Contractor shall remedy at no cost to the Employer any defects due to the materials, or workmanship not being in accordance with the contract.

The cost of remedying defects attributable to any other cause shall be valued as a variation. Failure to remedy any defects or complete outstanding work within a reasonable time of the notice of the Employer shall entitle the Employer to carry out all necessary work from the Performance Security and Security deposit.

Article 10: Arbitration

10.1 Every dispute, difference, or question which may at any time arise between the parties hereto or any person claiming under them, touching or arising out of or in respect of this agreement or the subject matter thereof shall first be endeavored to be amicably resolved at the Top Management level of the parties. However, in the event of such dispute, difference or question, etc., remaining unsolved, the same shall be referred to the arbitration by a sole arbitrator appointed mutually by the parties as per provisions of the Arbitration & Conciliation Act, 1996 shall be applicable. The place of such arbitration shall be at Aizawl, Mizoram.

Article 11: MONITORING:

- a) Effective monitoring shall be carried out by the Executing Agency and the Employer to monitor the progress of the work in implementation of the project.
- b) During the various stages of execution, Executing Agency shall submit monthly/quarterly progress reports along with minimum 4 (four) site photographs of size 4" x 6".
- c) The Executing Agency must put up Display Board as per instruction given by the Engineer-incharge for adherence of social monitoring at the work site as soon as the work is started.

Article 12: ASSIGNMENT OF THE AGREEMENT:

12.1 The Executing Agency shall not assign or transfer or part with any of the right, duties of obligations, wholly or in part, under this agreement to any other party without previous consent in writing of the Employer, except as provided under the agreement.

Article 13: RESPONSIBILITIES OF THE EMPLOYER:

- a) The Employer shall make available the site for the work to the Executing Agency on signing the agreement.
- b) The Employer will not be responsible to the Executing Agency of the item required for execution of contract.
- c) Employer shall make payment due under this agreement to the Executing Agency. However, the Employer may levy compensation upon the Executing Agency due to non-fulfillment of any clause of the contract or for bad work or deficiency in services or any other reasons whatsoever deemed appropriate under relevant rules and regulations.

Article 14: ROLES AND RESPONSIBILITIES OF THE EXECUTING AGENCY:

- a) Subsequent to the signing of the agreement, the Executing Agency shall forthwith take possession of the site from the date of handing over by the Employer and shall nominate a qualified site Engineer(s) for Execution of the project under intimation to the Employer. In case the employer advised the Executing Agency for replacement of site engineer at any time during the execution period, the same should be duly considered and suitable replacement should be provided.
- b) The Executing Agency shall execute the works as per approved Estimate and Architectural Drawings
- c) The Executing Agency shall be wholly, solely and fully responsible for the timely completion of the project, and to ensure quality of the works as per approved Designs and also the structural safety during and after completion of the project.
- d) The Employer or any person authorized by him can inspect and check the construction work from time to time to see that the works are being constructed as per the approved drawings and specifications. If any defects are found or deviation from the approved plan without the written permission of the Employer noticed during the inspection, the same should be rectified without any hesitation with own expenses.
- e) The Executing Agency shall be responsible for maintaining proper, specifications, workmanship and safety of all those who are engaged in the Project works.
- f) Liability for all defects in the works should be rest with the Executing Agency for a period of 12 (twelve) months from the date of its handing over in all respect to the Employer and the Executing Agency shall be responsible for satisfactory rectification immediately during the liability period.
- g) Any defects discovered and brought to the notice of the Executing Agency during the period aforesaid shall be rectified by Executing Agency forthwith at their own cost and expenses. In the event of the failure on the part of the Executing Agency to rectify the defects, the same may without prejudice to any other rights available to Employer in Law can be rectified by the Employer for and on behalf of Executing Agency and at the cost and expense of the Executing Agency, after due notice of 30 (thirty) days to the Executing Agency.
- h) The Employer shall have the right to deduct or set off the expenses incurred by it rectifying the defects as aforesaid from or against any amount due and payable or becoming due and payable by the Employer to the Executing Agency under this agreement or from any other amount due. The Employer shall be entitled to claim the balance due with interest and recover the same from the Executing Agency, if the amount claim is not paid on demand.
- i) The Executing Agency shall unless otherwise specified by fully responsible for procurement of all material and services for the construction activity.
- j) Executing Agency shall be fully responsible for acts or omissions committed by it.
- k) The Executing Agency shall be fully responsible to defend any suits or arbitration cases arising in respect of the project in connection with the work between the Executing Agency and its Contractor(s) at its own cost.
- l) The Executing Agency shall be fully responsible for observance of all labor laws and other laws applicable and shall indemnify and keep indemnified the Employer against effect of non-observance of any such laws by it or the Contractors. Further, Employer shall not be responsible in any manner whatsoever, for damages/compensation under Workman Compensation Act or any other law or in torts or in Civil law to the employees of Executing Agency and/or Contractor(s) and /or Labor employed.
- m) The Executing Agency shall send completion report for all the services to the office of the Employer in writing within 15 days of completion of the Project in all respect.
- n) No payment shall be made to the contractor for any damage caused by rain, snowfall, flood or any other natural causes whatsoever during the execution of work. The damage to work shall be made good by the contractor at his own cost and no claim in the matter shall be entertained.

- o) The work shall be carried out in such manner so as not to interfere or effect or disturb other works, being executed by other agencies, if any.
- p) Any damage done by the contractor to any existing work shall be made good by him at his own cost. Otherwise the same shall be got done at his risk and cost.
- q) The contractor shall make his own arrangements for obtaining electric connection(s), if required, and make necessary payments directly to the Department concerned. The Department will however make all reasonable recommendations to the authority concerned in this regard.
- r) The Contractor or his authorized representative should always be available at the site of work to take instructions from Department Officers and ensure proper execution of work. No work should be done in the absence of such authorized representative.
- s) The Contractor will be responsible to provide potable and safe drinking water to labor engages in execution of work.
- t) Signboard as instructed by the Department should put up by the Contractor at his own cost.
- u) The Contractor shall incorporate all necessary changes in the Detailed Estimates /DPR as may be suggested by the employer subsequently.

Article 15: TERMINATION OF THE PROJECT:

The Employer shall have the right to terminate the Executing Agency from the contract works of the project on the following grounds: -

- a) If the Executing Agency fails to carry out any obligation under the contract agreement in spite of issue of notice to correct by the Employer.
- b) If the Executing Agency abandons the works or otherwise plainly demonstrates the intention not to continue performance of his obligations under the contract agreement.

Article 16: QUALITY MONITORING:

The Executing Agency shall ensure Quality Control measures on different aspects of construction including materials, workmanship and correct construction methodologies to be adopted. The Executive Agency must comply with Bureau of Indian Standards (BIS) in all the materials used in the construction works and any discrepancy found in this regards, appropriate action will be taken against the Executive Agency.

Article 17: COMPLETION REPORT:

- 17.1 The contractor shall furnish Completion Report along with No Objection Certificate (NOC) from concerned Village Council, on completion of the work and handing over the same to the Department, three sets of print Photos, showing the working detail of the several components.

SECTION-III: SPECIAL CONDITIONS FOR CONTRACTOR

- 1** The Contractor will be required to attend the office of Executive Engineer for discussion of work progress, remarks, etc. whenever required with all reference data, books, IS specification etc. at his own cost.
- 2** The contractor shall furnish the sheet along with program of execution for completion of work within the time limit stipulated in the tender.
- 3** In case of any damage / failure either during construction or after commissioning within the defect liability period, due to defective construction all repairs or reconstruction of the structure shall have to be carried out by the contractor, entirely at his risk and cost.
- 4.** The contractor shall comply with the provisions of the contract and with the care and diligence execute and maintain the works and provide all labor and materials, tools and plants including for measurements and supervision of all works, structural plans and other things of temporary or permanent nature required for such execution and maintenance in so far as the necessity for providing these, is specified or is reasonably inferred from the contract. The contractor shall take full responsibility for adequacy, suitability and safety of all the works and methods of construction.
- 5.** The contractor shall execute the whole and every part of the work in the most substantial and workmanlike manner both as regards materials and otherwise in every respect in strict accordance with the specifications. The contractor shall also conform exactly, fully and faithfully to the design, drawings and instructions in writing in respect of the work signed by the engineer-in-charge and the contractor shall be furnished free of charge one copy of the contract documents together with specifications, designs, drawings and instructions as are not included in the standard specifications of Central Public Works Department or in any Bureau of Indian Standard or any other, published standard or code or schedule of rates or any other printed publication referred to elsewhere in the contract.

SECTION-IV: GENERAL SPECIFICATIONS

- 1** Materials and methods of construction for all civil works shall be as per relevant Indian standard specification; part of which are incorporated in the standard specification of MPWD and all will be followed during the execution of the work. The work shall be executed as per the guidelines and provisions of B.I.S. All materials shall conform to Indian standard code of practice National Building Code to maintain quality of work.
- 2** All materials to be used shall conform to the relevant specifications as per the latest version of the Indian Standards, unless otherwise stated in the detailed specifications of items of work. A set of specimen samples of all approved materials shall be kept in bottle or otherwise at site, cost of which is to be borne by the contractor.
- 3** Water required for the execution of the work shall be supplied by the contractor at his own cost.
- 4** The source from which sand is to be obtained shall be subjected to the approval of engineer-in-charge. The sand shall be clean, sharp and gritty to touch and be freed from earth and other impurities by washing. The sand shall be washed to such a degree that when a handful is mixed with clean water in a glass and allowed to stand for an hour the precipitate of mud over the sand shall not exceed 5%.
- 5 Cement concrete**
The concrete shall consist of an aggregate of the proportion by volume defined in relevant schedule item or work. Only measured quantity shall be used.
Water shall be added by measured quantities if the engineer so direct.
- 6 Laying**
The cement, sand and stone chips shall be mixed properly in mechanical mixer in such a manner as to avoid loss of water. The concrete shall be mixed for minimum period of 2 minutes or unit it is of even colour and uniform consistency throughout. As soon as the concrete is mixed it should be removed to the work site with conveyor or pipe rapidly as practicable. The concrete laid will be vibrated for compaction by the vibrators. Slum test will be carried at site during execution of work if necessary.
- 8 Curing**
The concrete laid shall not be disturbed and shall be kept thoroughly damped by means of wet matting and sand until it shall have become thoroughly set and hard enough to prevent its drying and cracking.
The aggregate shall consist of stone ballast of quality approved by engineer-in-charge and shall consist of graded size 20 mm and down wards as per specification or the size mentioned in the item description. Curing period for PCC shall be 14 days minimum. Use of curing compound shall be opted as per manufacturer's specification.
- 9 Formwork:** Contractor shall furnish on the site of work sufficient number of centering, forms, moulds or templates for its expeditious prosecution, the forms shall be made in such as way and such material as will ensure a very smooth surface on the finished concrete. Forms and centering shall be left in place until the concrete has set sufficiently to permit the removal without danger to the structure.
- 10 Inspection**
Materials will not be considered acceptable without verified by the Engineer-in-charge.

INFORMATION ON BID CAPACITY

(A) Existing commitments and on-going works

Description of Work	Place & State	Contact No.	Name & Address of Employer	Value of Contract (Rs. in lakh)	Stipulated period of completion	Value of remaining work to be completed	Anticipated date of completion

(B) Works for which bids already submitted

Description of Work	Place & State	Name & Address of Employer	Estimated Value of works (Rs. in lakh)	Stipulated period of completion	Date when decision is expected	Remarks

(Signature of Authorized Signatory of the Bidder) _____

Name of the signatory _____

Title of the signatory _____

Date _____

DECLARATION OF TENDERER

I/We have read and examined the notice inviting tender & its terms and conditions, Instruction to Bidder (ITB), General conditions of contract, and special conditions for contractor, detailed specification of works, and bill of quantities, qualification information and all other contents in the tender document for the work.

I/We hereby tender for the execution of the work specified for the Governor of Mizoram within the time specified and in accordance to all respect with the instructions in general conditions of contract & special conditions for contractor.

I/We agree to keep the tender open for ninety (90) days from the due date of its opening and not to make any modification in its terms and conditions.

Rs. (2% of estimated cost put to tender) is hereby forwarded as **Earnest Money** in the form of Call Deposit/Deposit at Call, Demand Draft or Banker Cheque of a National Scheduled Bank. I/We agree to furnish the prescribed **Performance Security** within prescribed period, failing which the department have the right to black list me/us and will not bid any contract under Agriculture & Farmers' Welfare Department for a period of 5(years). Further, if i/we fail to commence work as specified, I / we agree without prejudice to any other right or remedy available in law that the said performance guarantee shall be forfeited for the property of the Government of Mizoram.

I/We hereby declare that i/we shall treat the tender document, BOQ and other records connected with the work as secret/confidential documents and shall not communicate information/derived there to any person other than a person to whom i/we am/are authorized to communicate the same or use the information in any manner prejudicial to the safety of the State.

Dated:

Witness Tenderer

Signature :

Name :

Postal address :

Mobile number :

Tenderer

Signature :

Name :

Postal address :

Mobile number :

FORM OF FINANCIAL BID

Gr. No. & Name of Work : B. Construction of Warehouse with Associated Infrastructure at Sangau,
Lawngtlai District.

NIT No. : NIT No.EE/AGR-AE/24/02(WIF) Dt. 04/12/2024

To,

The Director of Agriculture & Farmers' Welfare Department (Employer)
Mizoram:Aizawl (Address)

Sir,

We, the undersigned, declare that:

1. We have examined and have no reservations to the Bidding Document including Addenda.
2. We offer to execute the Work described above and remedy any defects therein in conformity with the Conditions of Contract including Specifications, Drawings, Bill of Quantities accompanying this Bid for a sum of Rs _____ (Rupees _____) only.
3. We undertake to abide by the Final Sum coming out of the correction of arithmetical errors as indicated in the General Conditions of Contract.
4. We also undertake, if our Bid is accepted, to commence the work within the period as indicated in the Contract Documents and to complete the whole work comprised in the Contract within the time stated in the Contract Documents.
5. We agree to abide by this Bid for the period of 90 days from the date fixed for receiving the same, and it shall remain binding upon us and may be accepted at any time before the expiration of that period.
6. We undertake that unless and until a formal Agreement is prepared and executed, this Bid, together with your written notification of Letter of Acceptance shall constitute a binding contract between us.
7. We understand that you are not bound to accept the lowest or any tender you may receive.
8. I/We do hereby submit our Financial Bid, complete with all the required information as stipulated in your Bidding Documents.

Signature of authorized signatory _____

Name _____

Title _____

Date _____

BOQ AND DRAWINGS

BILL OF QUANTITY (BOQ)

Name of Work : Construction of Warehouse with Associated Infrastructure at Sangau, Lawngtlai District.

Estimated Cost Put to Tender : Rs. 94,72,400.00 (Rupees ninety four lakh seventy two thousand four hundred) only.

Sl. No.	Item of Work	Quantity	Unit	Rate		Amount
				In Figures	In Words	
A. WAREHOUSE						
1	Earthwork in excavation over areas (exceeding 30cm in depth, 1.5m width as well as 10sqm on plan) including disposal of excavated earth, lead upto 50m and lift 1.5m, disposed earth to be levelled and neatly dressed. (a) Ordinary and hard soil Site Development	1231.20	m³			
2	Earthwork in excavation in foundation trenches or drains etc. (not exceeding 1.5m in width or 10sqm on plan) including dressing of sides and ramming of bottoms, lift upto 1.5m including getting out excavated soil and disposal of surplus excavated soil as directed within a lead of 50 metres. (a) Ordinary Soil Side drain & R/Wall foundation	35.75	m³			
3	Earthwork in excavation in foundation trenches etc. not exceeding 2 meters depth including dressing of bottom and sides of trenches and subsequent filling and compaction in 15cm layers as in column foundations, fence posts, etc. (a) Ordinary Soil Column Footing Foundation	104.98	m³			

4	Filling available excavated earth (excluding rock) in trenches, plinth, sides of foundations etc. in layers not exceeding 20cm in depth, consolidating each deposited layer by ramming and watering, lead up to 50 m and lift upto 1.5 m.	104.98	m ³			
5	Providing and laying in position cement concrete of specified grade etc. - All work upto plinth level: (a) 1:3:6 (1 cement : 3 coarse sand : 6 graded stone aggregate 20mm nominal size) Foundation		m ³			
	R/Wall foundation	2.70				
	Column footing	4.86				
	Outdoor flooring	0.43				
	Sub - Total	7.99				
6	Regular coursed rubble masonry with hard stone in foundation etc. complete. (a) in cement mortar 1 : 3 (1cement : 3 fine sand)		m ³			
	R/Wall	43.20				
	Plinth level walls	20.52				
	Porch platform	7.92				
	Steps	0.30				
	Sub - Total	71.94				
7	Back filling behind abutment, wing wall and return wall complete as per drawing and Technical Specification. (a) Gravelly material.	22.50	m ³			

8	Providing weep holes in brick masonry/stone masonry, plain/reinforced concrete, abutment, wing wall, return wall with 100mm dia AC pipe extending through the full width of the structure with slope of 1(V):20(H) towards drawing face complete as per drawing and technical specification.	36.00	rm			
9	Providing and laying in position cement concrete etc. (a) 1:1.5:3 (1 cement :1.5 coarse sand :3 stone aggregate 20mm nominal size)		m ³			
	Approach Road	39.37				
	Front yard	2.60				
	Side yard	2.81				
	Sub - Total	44.78				
10	Providing and laying in position reinforced cement concrete etc. (b) 1:2:4 (1 cement : 2 coarse sand : 4 graded stone aggregate 20mm nominal size)		m ³			
	Footing	25.60				
	Column	2.84				
	Sub - Total	28.43				
11	Reinforced cement concrete work in walls including attached pillasters, columns, pillars, posts, piers, abutments, return walls, retaining walls, struts, buttresses, string or lacing courses, fillets etc. (b) 1:2:4 (1 cement : 2 coarse sand : 4 graded stone aggregate 20mm nominal size) Column	9.38	m ³			

12	Reinforced cement concrete work in beams, suspended floors, roofs having slope up to 15° landings, balconies, shelves, chajjas, lintels, bands, plain window sills, staircases etc. (b) 1:2:4 (1 cement : 2 coarse sand : 4 graded stone aggregate 20mm nominal size)		m ³			
	Floor slab	19.44				
	Plinth beam	10.40				
	Tie beams	4.05				
	Roof Beams	6.05				
	Porch beam	1.13				
	Rain Gutters	6.74				
	Sub - Total	47.79				
13	Steel reinforcement for RCC work including straightening, cutting, bending, placing in position and binding all complete. (a) Mild steel and Medium Tensile steel bars.		kg			
	Foundations	2843.10				
	Columns	2908.58				
	Beams	7655.72				
	Slab	1944.00				
	Sub - Total	15351.39				
14	Steel work in built up tubular (round, square or rectangular hollow tubes etc.) trusses etc., including cutting, hoisting, fixing in position and applying a priming coat of approved steel primer, including welding and bolted with special shaped washers etc. complete.	2446.91	kg			

15	Centering and shuttering including strutting,propping etc. and removal of form for :					
	(c) Columns, pillars, piers, abutments, posts and struts.	109.80	m²			
	(d) Lintels, beams, plinth beams, girders, bressumers and cantilevers etc	195.21	m²			
	(e) Suspended floors, roofs, landings, shelves and their support, balconies and chajjaj, etc.	162.00	m²			
16	Half brick masonry with first class brick in superstructure above plinth level upto floor V level. (a) in cement mortar 1 : 3 (1 cement : 3 coarse sand)	228.60	m²			

17	15 mm cement plaster 1 : 3 (<i>1 cement : 3 fine sand</i>).	718.59	m²			
18	Providing and fixing aluminium work for doors, windows, ventilators and partitions with extruded built up standard tubular and other sections of approved make conforming to IS: 733 and IS : 1285, anodised transparent or dyed to required shade according to IS : 1868. (Minimum anodic coating of grade AC 15), fixed with rawl plugs and screws or with fixing clips etc. (Glazing and paneling to be paid for separately). For fixed portion.	10.80	m³			
19	For shutters of doors, windows & ventilators including providing and fixing hinges/ pivots and making provision for fixing of fittings wherever required including the cost of PVC / neoprene gasket required. (Glazing to be paid for separately) (a) Natural colour	10.80	m²			
20	Providing and fixing glazing in aluminium door, window, ventilator shutters and partitions etc. with PVC/ neoprene gasket etc. complete as per the architectural drawings and the directions of engineer-in-charge . (a) With glass panes of 4.00 mm thickness	10.80	m²			

21	<p>Providing Trapezoidal Polyester Coated Galvanised Steel Sheets Roofing of any colour of 1.06m width at all levels including fitting and fixing ridging with self drilling , self tapping screws, EPDM washers etc. complete excluding the cost of purlin, rafter and trusses</p> <p>(i) For 0.40 mm thick</p>	205.38	m²			
22	<p>Supplying and fixing pre-painted galvalume roller door shutters of approved make (Dura Ultima or equivalent), made of required size of curtain panel, bottom rail, polyglide, guide channel, bracket, spindle assembly (spindle, spring, drum wheel) and lock system including the cost of providing and fixing complete.</p> <p>(a) Delux roller door shutter</p>	18.00	m²			
23	<p>Finishing walls with water proofing cement paint of approved brand and manufacture and of required shade to give an even shade. New work (two or more coats)</p>	718.59	m²			
24	<p>Providing and fixing M.S. grills of required pattern in frames of windows etc. with M.S. flats, square or round bars etc. including priming coat with approved steel primer all complete.</p>	10.80	m²			

B. STAFF/GS QUARTERS						
25	Earthwork in excavation over areas (exceeding 30cm in depth, 1.5m in width as well as 10sqm on plan) including disposal of excavated earth, lead upto 50m and lift upto 1.5m, disposed earth to be levelled and neatly dressed. (a) Ordinary and Hard Soil Site Development	67.18	m ³			
26	Earthwork in excavation in foundation trenches or drains etc. (not exceeding 1.5m in width or 10sqm on plan) including dressing of sides and ramming of bottoms, lift upto 1.5m including getting out excavated soil etc. (a) Ordinary Soil Foundation Footings	26.07	m ³			
27	Filling available excavated earth (excluding rock) in trenches, plinth, sides of foundations etc. in layers not exceeding 20cm in depth, consolidating each deposited layer by ramming and watering, lead up to 50 m and lift upto 1.5 m.Foundation	6.50	m ³			
28	Providing and laying in position cement concrete of specified grade etc. (a) 1:3:6 (1 cement : 3 coarse sand : 6 graded stone aggregate 20mm nominal size)		m ³			
	Foundation Footing	1.30				
	Septic Tank	0.28				
	Sub - Total	1.58				

29	Providing and laying in position cement concrete of specified grade excluding cost of centering and shuttering - All work upto plinth level : (a) 1:1.5:3 (1 cement :1.5 coarse sand :3 stone aggregate 20mm nominal size)	16.05	m ³			
30	Reinforced cement concrete work in walls including attached pillasters, columns etc. (b) 1:2:4 (1 cement : 2 coarse sand : 4 graded stone aggregate 20mm nominal size)		m ³			
	Foundation	2.59				
	Column post	2.59				
	Sub - Total	5.18				
31	Reinforced cement concrete work in beams, suspended floors, roofs having slope up to 15° landings, balconies, shelves, chajjas, lintels, bands, plain window sills, staircases etc. (b) 1:2:4 (1 cement : 2 coarse sand : 4 graded stone aggregate 20mm nominal size)		m ³			
	Plinth beam	2.40				
	Beams	3.13				
	Floor	6.83				
	Roof Slab	6.73				
	Countertop	0.17				
	Septic Tank Cover	0.28				
	Man-hole	-0.05				
	Sub - Total	19.47				

32	Steel reinforcement for RCC work including straightening, cutting, bending, placing in position and binding all complete. (a) Mild steel and Medium Tensile steel bars.		kg			
	Foundations	259.20				
	Columns	802.13				
	Beams	1491.44				
	Slab	1395.09				
	Sub - Total	3947.86				
33	Centering and shuttering including strutting, propping etc. and removal of form for :					
	(c) Columns, pillars, piers, abutments, posts and struts.	41.40	m ²			
	(d) Lintels, beams, plinth beams, girders, bressumers and cantilevers etc.	79.33	m ²			
	(e) Suspended floors, roofs, landings, shelves and their support, balconies and chajjaj etc.	54.98	m ²			

34	Half brick masonry with first class brick in superstructure above plinth level upto floor V level. (a) in cement mortar 1 : 3 (1 cement : 3 coarse sand)	109.43	m²			
35	15 mm cement plaster 1 : 4 (1 cement : 4 fine sand).	218.86	m²			
36	6mm cement plaster to ceiling 1 : 3 (1 cement : 3 fine sand)	47.40	m²			
37	Providing and fixing aluminium work for doors, windows, ventilators and partitions with extruded built up standard tubular and other sections of approved make conforming to IS: 733 and IS : 1285, anodised transparent or dyed to required shade according to IS : 1868. (Minimum anodic coating of grade AC 15), fixed with rawl plugs and screws or with fixing clips etc. (Glazing and paneling to be paid for separately). For fixed portion.	12.45	m²			

38	For shutters of doors, windows & ventilators including providing and fixing hinges/ pivots and making provision for fixing of fittings wherever required including the cost of PVC / neoprene gasket required. (Glazing to be paid for separately) (a) Natural colour	12.45	m ²			
39	Providing and fixing glazing in aluminium door, window, ventilator shutters and partitions etc. with PVC/ neoprene gasket etc. complete as per the architectural drawings and the directions of engineer-in-charge. (a) With glass panes of 4.00 mm thickness	12.45	m ²			
40	Providing 2nd class local wood work dressed in frames of chaukat for doors, windows, clerestory windows fixed in position.	0.13	m ³			
41	Providing and fixing 1st class local wood panelled shutters for doors etc. including M.S. butt hinges with necessary screws, etc. complete. (b) 35 mm thick	4.59	m ²			

42	Providing and fixing factory made PVC door frame made of PVC extruded section (Chaukhat) having overall dimension of 48x40 mm (tolerance + 1 mm) with wall thickness 2.0 mm + 0.2 mm, corners of the door frame to be mitred and joined by means of plastic/M.S. galvanised brackets and stainless steel screws etc. (Sintex, Plasopan or equivalent) :	4.80	rm			
43	Factory made PVC door shutters made of styles and rails of a uPVC hollow section of size 59x24 mm and wall thickness 2 mm (\pm 0.2 mm) with inbuilt edging on both sides. The styles and rails mitred and joint at the corners etc. (For W.C. and bathroom door shutter) (Sintex, Plasopan or equivalent). (a) 24mm thick shutter	1.08	m²			
44	Finishing walls with water proofing cement paint of approved brand and manufacture and of required shade to give an even shade. New work (two or more coats)	218.86	m²			
45	Painting with synthetic enamel paint of approved brand and manufacture in all shades on new work (two or more coats). (a) General quality Door	9.18	m²			

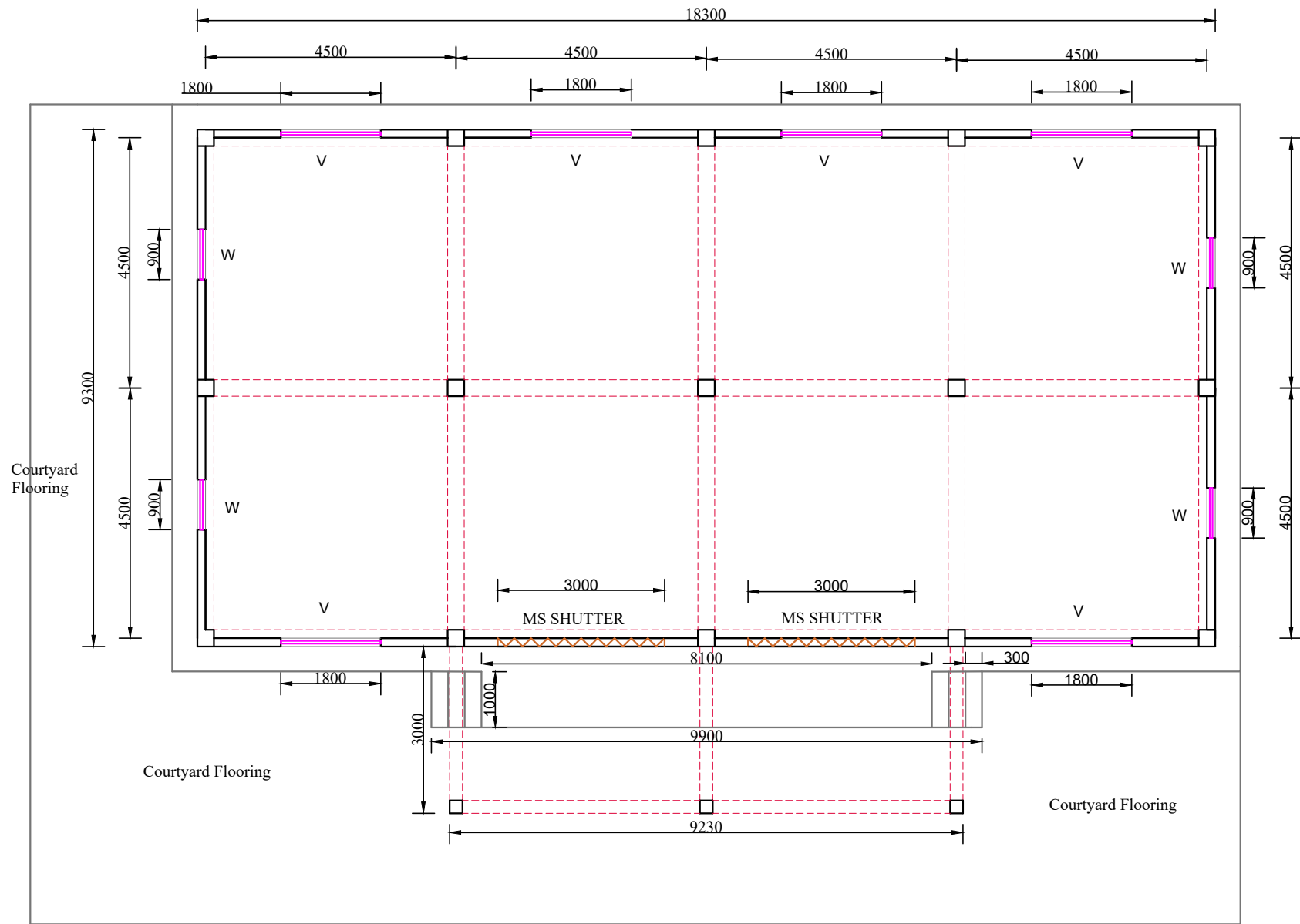
46	<p>Providing and placing on terrace (at all floor levels) polyethylene water storage tank, with cover and suitable locking arrangement and making necessary holes for inlet, outlet and overflow pipes but without fittings and the base support for tank. (a) Syntex or equivalent</p>	2000.00	ltr			
47	<p>Providing and fixing water closet squatting pan (Indian type W.C. pan) with 100 mm uPVC P or S trap, with all fittings and fixtures complete, including cutting and making good the walls and floors wherever required: (Without Cistern) (a) Orissa pattern pan with integral type foot rests (i) White</p>	1.00	no			
48	<p>Providing and fixing White vitreous china wash basin Standard of Parryware/ Hindware/ Cera and equivalent make with R.S. or C.I. brackets, 15mm C.P. brass pillar taps, C.P. brass chain with rubber plugs, 32mm C.P. brass waste of standard pattern etc. (b) Vitreous China Wash basin Compact 450 x 300 mm with single 15 mm C.P. brass pillar taps (i) White</p>	1.00	no			
49	<p>Providing and fixing vitreous china tall pedestal of Parryware/ Hindware/ Cera and equivalent make for wash basin completely recessed at the back for the reception of pipes and fittings. (i) White</p>	1.00	no			

50	<p>Providing and fixing Stainless Steel A ISI 304 (18/8) kitchen sink as per IS: 13983 with C.I. brackets and stainless steel plug 40 mm, including painting of fittings and brackets, cutting and making good the walls wherever required : (Hindware or equivalent)</p> <p>(a) Single Sink 610x510 mm bowl depth 200mm</p>	1.00	no			
51	<p>Providing and fixing on wall face SWRPVC soil, waste and vent pipes including jointing with rubber lubricant/cement solvent complete.</p> <p>(b) 75 mm dia</p>	20.00	rm			
52	<p>Providing and fixing SWRPVC plain bend of required degree (87.50°) including jointing with rubber lubricant/cement solvent complete.</p> <p>(b) 75 mm dia.</p>	5.00	no			
53	<p>Providing and fixing SWRPVC plain junction of required degree with access door (Y-junction) including jointing with rubber lubricant/cement solvent.</p> <p>(b) 75mm x 75mm x 75 mm</p>	5.00	no			

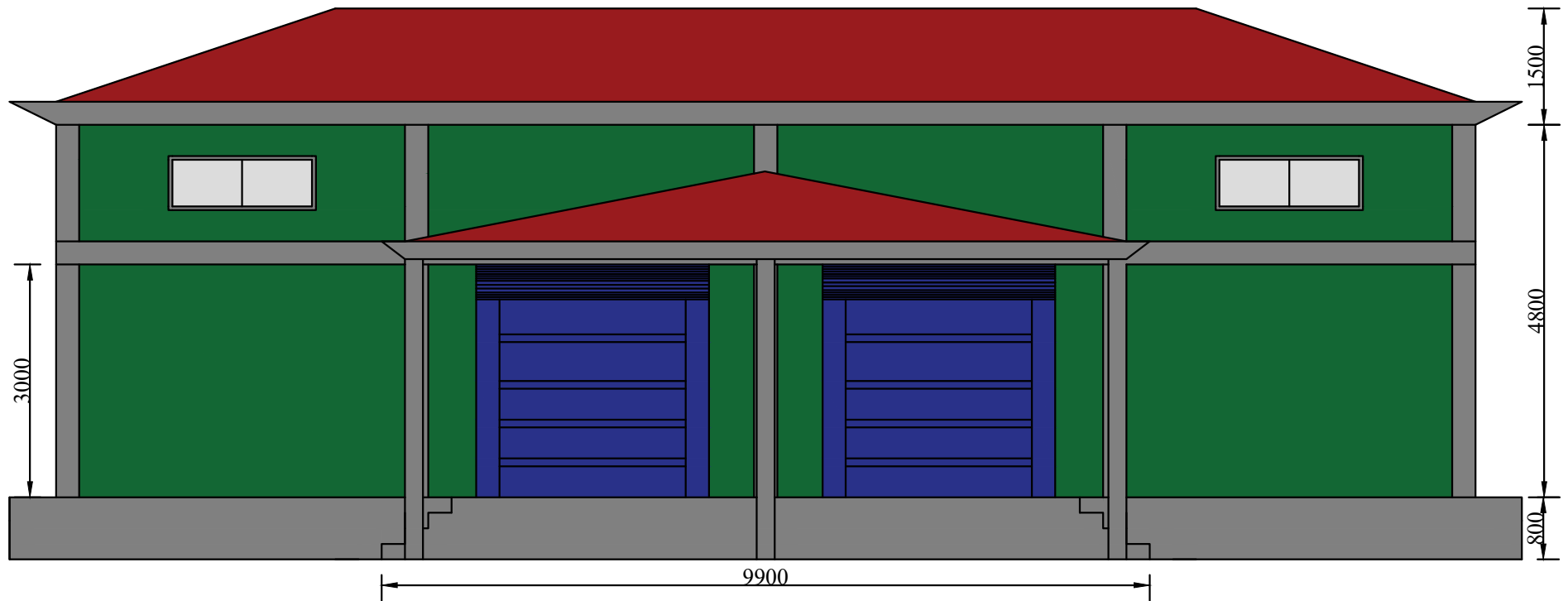
54	Providing and fixing SWRPVC socket including jointing with rubber lubricant/cement solvent. (b) 75x75x75mm.	5.00	no			
55	Providing and fixing G.I. pipes complete with G.I. fitting and clamps, including cutting and making good the walls etc. (internal works). (a) 20mm dia nominal bore	30.00	rm			
56	Providing and fixing brass bib cock of approved quality. (b) 20mm dia nominal bore	3.00	no			
57	Providing and fixing brass stop cock of approved quality. (b) 20mm dia nominal bore	1.00	no			

58	Providing and fixing G.I. Union in G.I. pipe including cutting and threading the pipe and making long screws etc. complete (New work). (b) 20mm dia nominal bore	4.00	no			
59	Providing and fixing Health faucet with flexible tube upto 1 metre long and holder of quality and make as approved by Engineer - in - charge.	1.00	no			
60	Providing & laying vitrified tiles in different sizes (thickness to be specified by the manufacture) with water absorption less than 0.08% and conforming to IS:15622,of approved make, in all colours and shades, in skirting/dado etc. (Payment for grouting of joints to be made separately)	7.08	m ²			
61	Providing and fixing M.S. grills of required pattern in frames of windows etc. with M.S. flats, square or round bars etc. including priming coat with approved steel primer all complete.	12.86	m ²			
TOTAL AMOUNT						

(Rupees _____) only



<p>GENERAL NOTES:</p> <p>1. All Dimensions are in MM unless otherwise specified.</p> <p>2. All Dimensions are according to scale provided from this drawing.</p> <p>3. No change shall be made in the Design, Layout and Drawing without prior consent of Agriculture & Farmers' Welfare Department.</p>		<p>SHEET TITLE:</p> <p>PLAN</p>	<table><tr><td>SHEET NO:</td><td>DATE:</td></tr><tr><td>01</td><td>SCALE:NTS</td></tr></table>	SHEET NO:	DATE:	01	SCALE:NTS	<p>PROJECT NAME : CONSTRUCTION OF WAREHOUSE WITH ASSOCIATED INFRASTRUCTURE</p> <p>LOCATION : SANGAU, LAWNGTLAI DISTRICT, MIZORAM</p>	<p>DEPARTMENT OF AGRICULTURE & FARMERS' WELFARE</p> <p>GOVERNMENT OF MIZORAM</p>
SHEET NO:	DATE:								
01	SCALE:NTS								



GENERAL NOTES:

1. All Dimensions are in MM unless otherwise specified.
2. All Dimensions are according to scale provided from this drawing.
3. No change shall be made in the Design, Layout and Drawing without prior consent of Agriculture & Farmers' Welfare Department.

SHEET TITLE:

Front view

SHEET NO:

02

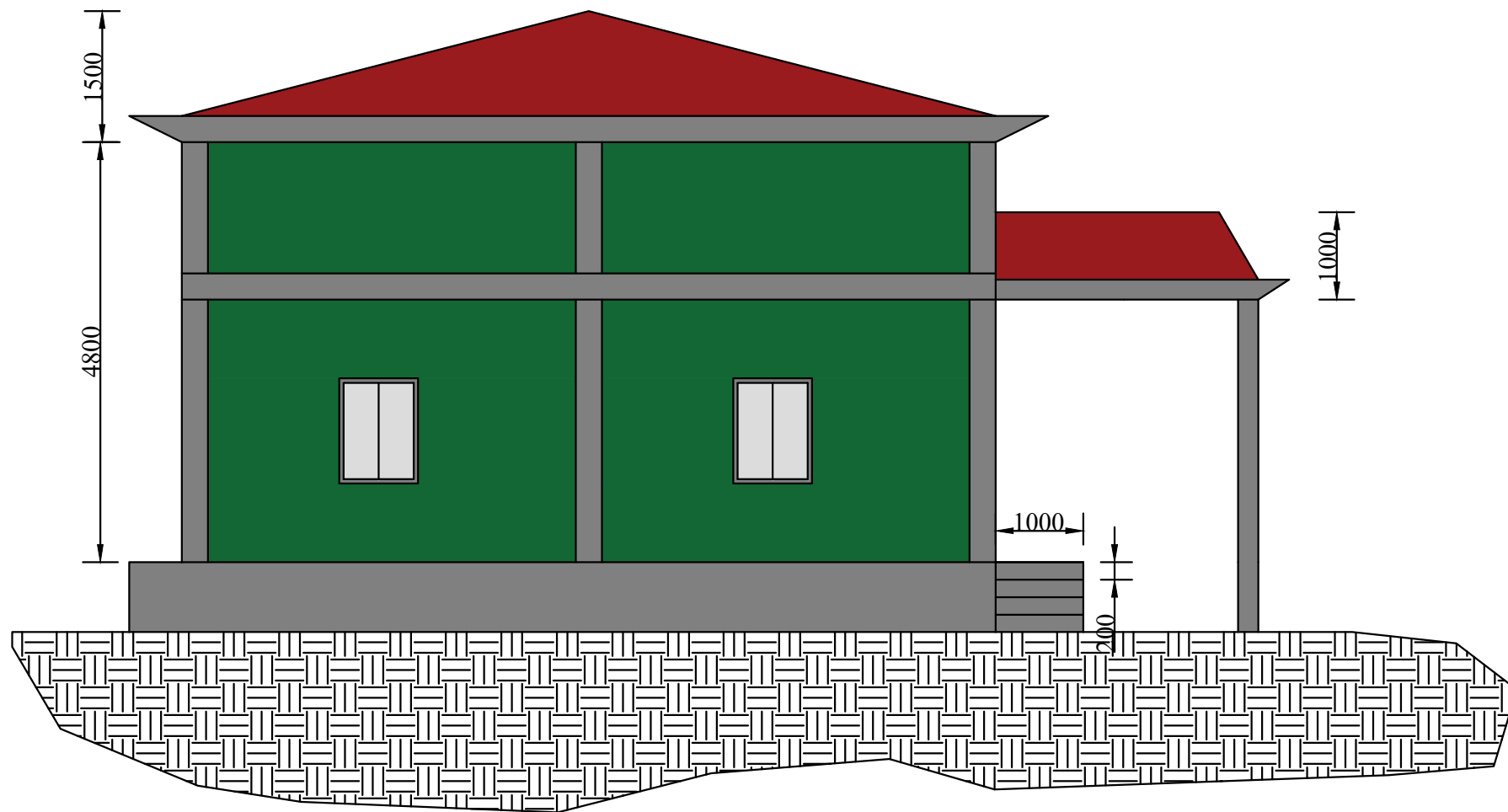
DATE:

SCALE: NTS

PROJECT NAME : CONSTRUCTION OF WAREHOUSE WITH ASSOCIATED INFRASTRUCTURE

LOCATION : SANGAU, LAWNGTLAI DISTRICT, MIZORAM

DEPARTMENT OF AGRICULTURE &
FARMERS' WELFARE
GOVT. OF MIZORAM



GENERAL NOTES:

1. All Dimensions are in MM unless otherwise specified.
2. All Dimensions are according to scale provided from this drawing.
3. No change shall be made in the Design, Layout and Drawing without prior consent of Agriculture & Farmers' Welfare Department.

SHEET TITLE:

Side view

SHEET NO:

03

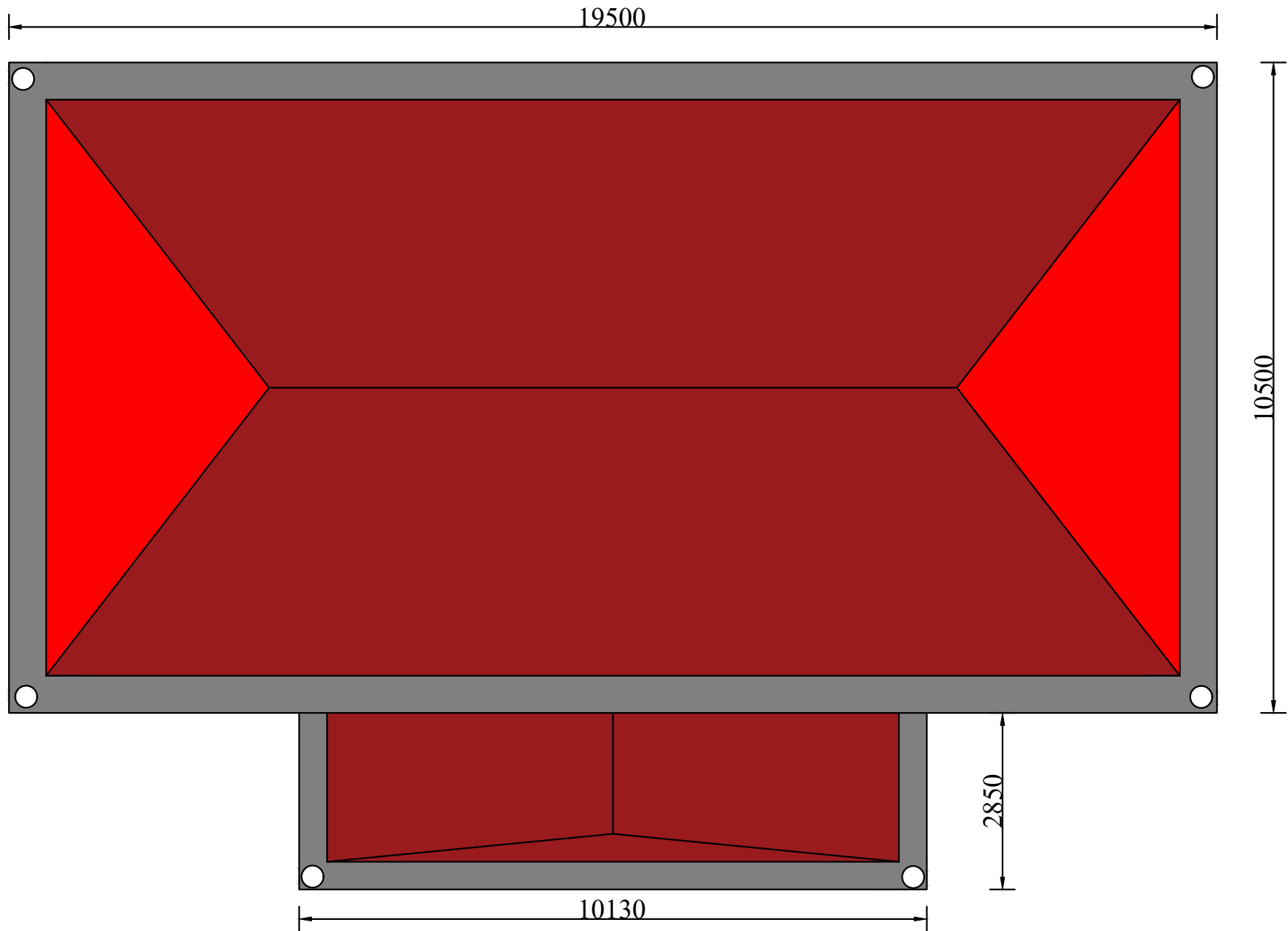
DATE:

SCALE: NTS

PROJECT NAME : CONSTRUCTION OF WAREHOUSE WITH ASSOCIATED INFRASTRUCTURE

LOCATION : SANGAU, LAWNGTLAI DISTRICT, MIZORAM

DEPARTMENT OF AGRICULTURE &
FARMERS' WELFARE
GOVT. OF MIZORAM



GENERAL NOTES:

1. All Dimensions are in MM unless otherwise specified.
2. All Dimensions are according to scale provided from this drawing.
3. No change shall be made in the Design, Layout and Drawing without prior consent of Agriculture & Farmers' Welfare Department.

SHEET TITLE:

Roof

SHEET NO:

04

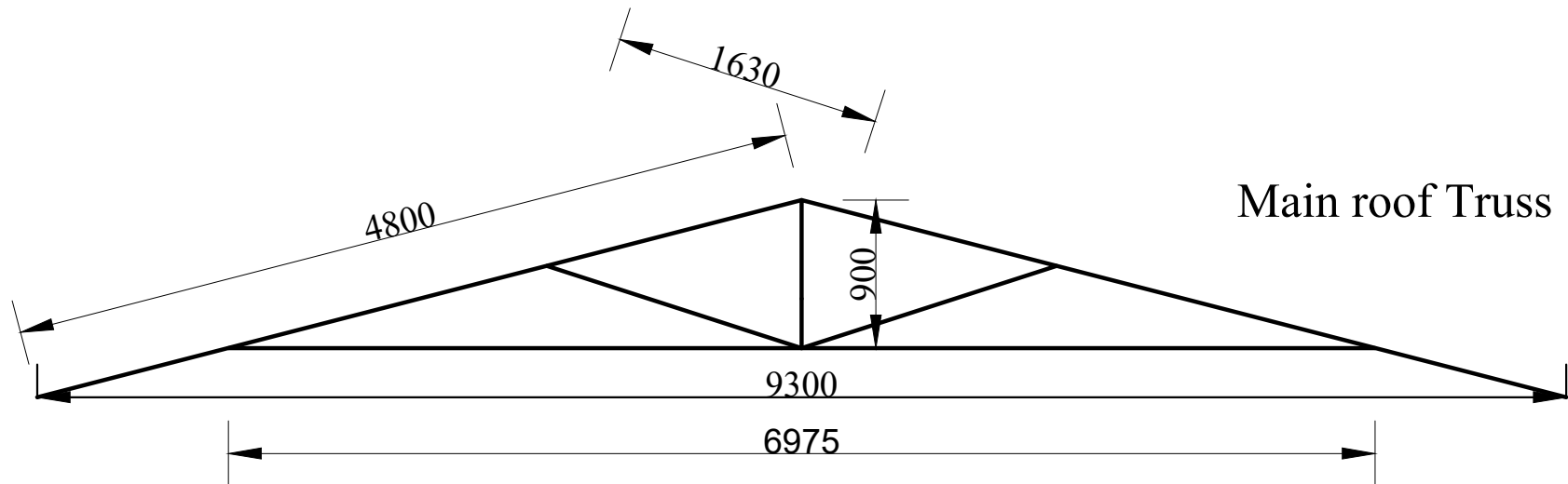
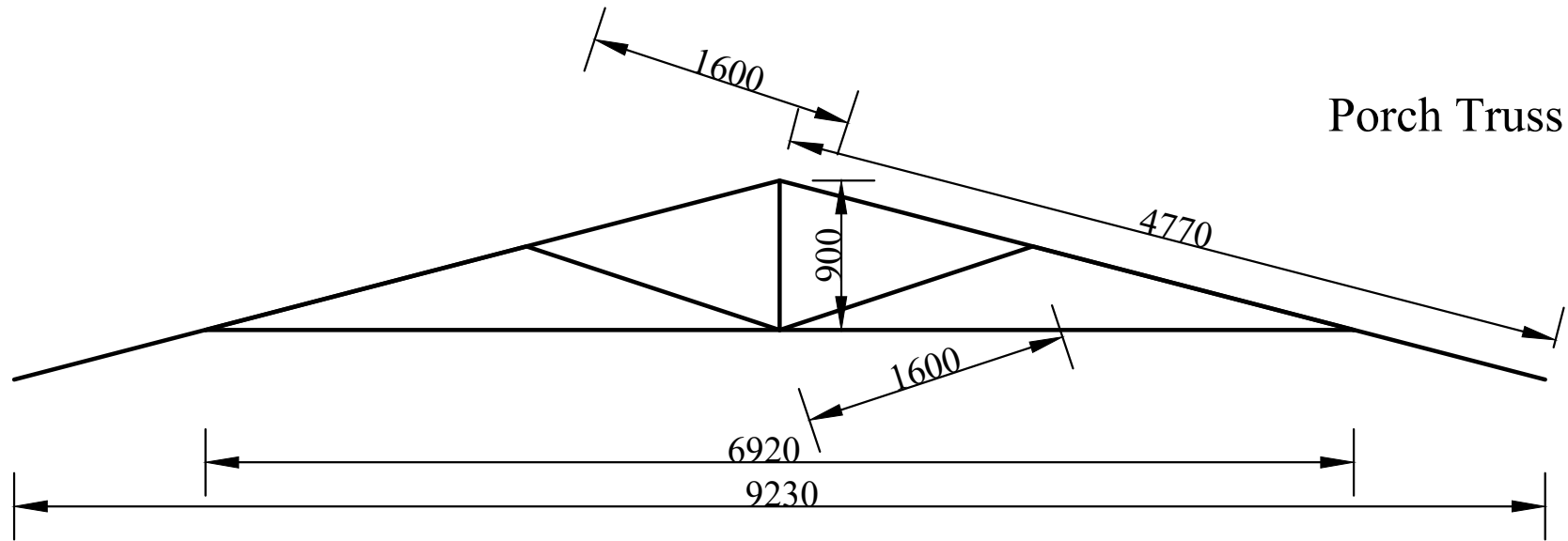
DATE:

SCALE:NTS

PROJECT NAME : CONSTRUCTION OF WAREHOUSE WITH ASSOCIATED INFRASTRUCTURE

LOCATION : SANGAU, LAWNGTLAI DISTRICT, MIZORAM

DEPARTMENT OF AGRICULTURE & FARMERS'
WELFARE
GOVERNMENT OF MIZORAM



GENERAL NOTES:

1. All Dimensions are in MM unless otherwise specified.
2. All Dimensions are according to scale provided from this drawing.
3. No change shall be made in the Design, Layout and Drawing without prior consent of Agriculture & Farmers' Welfare Department.

SHEET TITLE:

Roof Truss

SHEET NO:

05

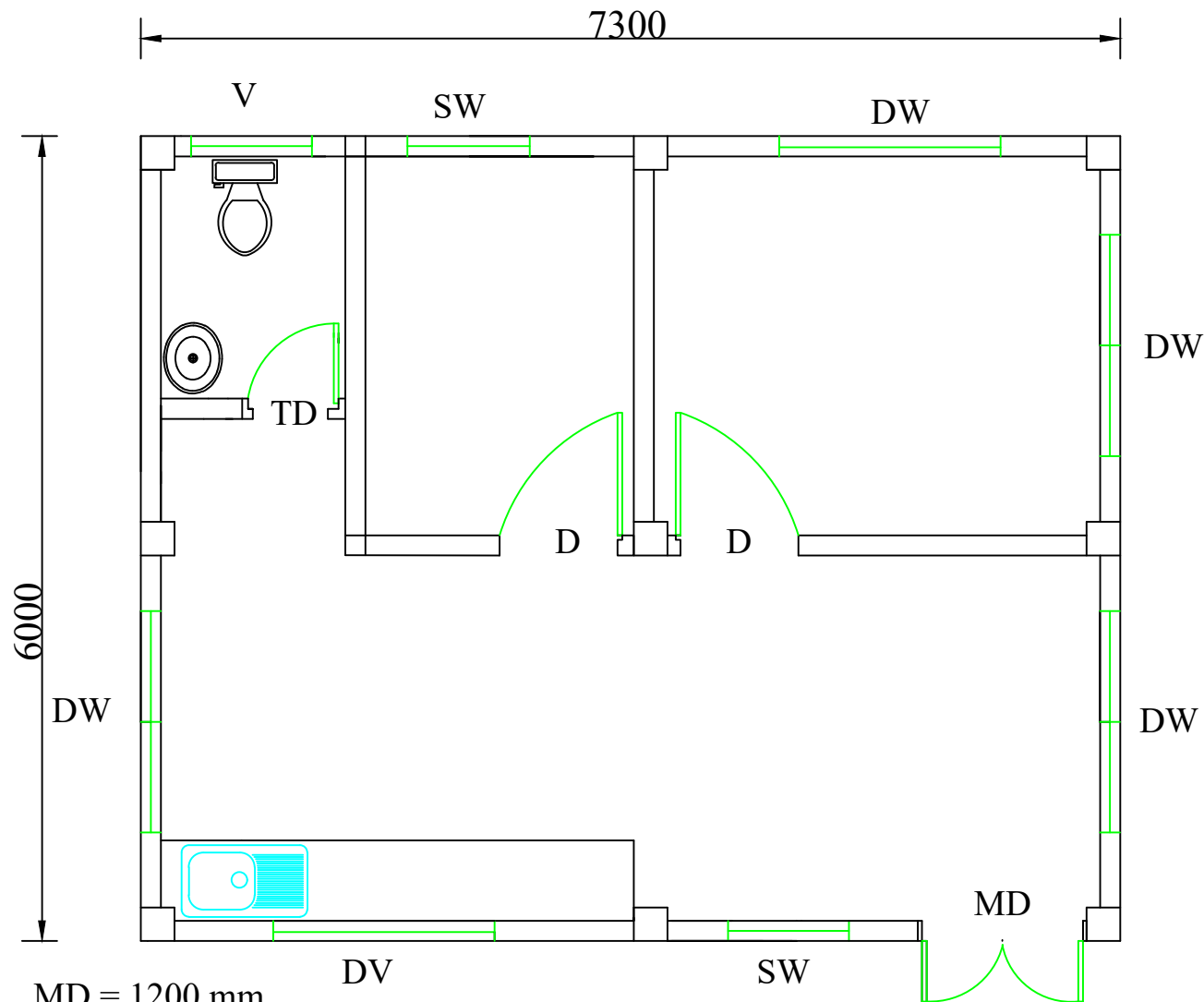
DATE:

SCALE:

PROJECT NAME : CONSTRUCTION OF
WAREHOUSE WITH ASSOCIATED
INFRASTRUCTURE

LOCATION : SANGAU, LAWNGTLAI
DISTRICT, MIZORAM

DEPARTMENT OF AGRICULTURE &
FARMERS' WELFARE
GOVT. OF MIZORAM



MD = 1200 mm
D = 914 mm
TD = 600 mm
SW = 914 mm
DW = 1650 mm
V = 914 mm
DV = 1650 mm

PROJECT:

PROPOSED BUILDING OF
QUARTERS AT SANGAU,
LAWNGTLAI DISTRICT,
MIZORAM

DRAWING:

ARCHITECTURAL DRAWING

SHEET TITLE:

FLOOR PLAN

AREA STATEMENT:

FLOOR AREA : 43.8 sqm

NOTE:

ALL DIMENSIONS ARE IN
MM

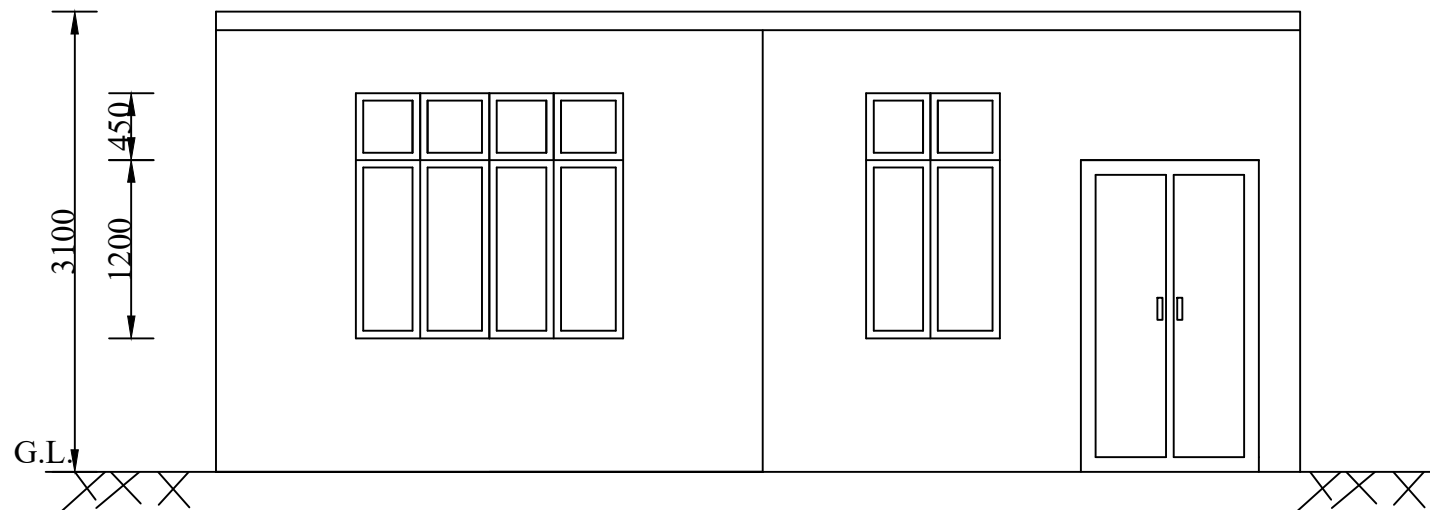
DATE : 15.10.2024

SCALE: NOT TO SCALE

SHEET NO. 1

PREPARED BY:

AGRICULTURE & FARMERS'
WELFARE DEPARTMENT,
GOVT. OF MIZORAM



PROJECT:

PROPOSED BUILDING OF
QUARTERS AT SANGAU,
LAWNGTLAI DISTRICT,
MIZORAM

DRAWING:

ARCHITECTURAL DRAWING

SHEET TITLE:

FRONT ELEVATION

AREA STATEMENT:

FLOOR AREA : 43.8 sqm

NOTE:

ALL DIMENSIONS ARE IN MM

DATE: 15.10.2024

SCALE: NOT TO SCALE

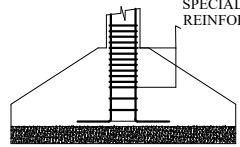
SHEET NO. 2

PREPARED BY:

AGRICULTURE & FARMERS'
WELFARE DEPARTMENT,
GOVT. OF MIZORAM

**STRUCTURAL DRAWINGS FOR CONSTRUCTION OF
WAREHOUSE WITH ASSOCIATED INFRASTRUCTURE AT
SANGAU, LAWNGTLAI DISTRICT**

1. FOUNDATION



SPECIAL CONFINING
REINFORCEMENTS >300mm

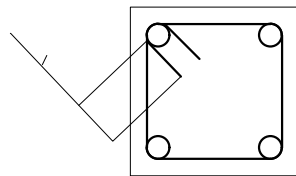
THE NET SAFE BEARING CAPACITY OF SOIL
IS TAKEN AS 250 kN/sq.m

PROVISION OF SPECIAL CONFINING REINFORCEMENTS IN FOOTINGS

1. PCC 1:3:6 100mm THICK SHALL BE LAID FOR LEVELLING COURSE BELOW FOUNDATION.
2. WHEN COLUMN TERMINATES INTO A FOOTING, OR MAT, SPECIAL CONFINING REINFORCEMENT SHALL EXTEND AT LEAST 300mm INTO THE FOOTING OR MAT.

2. COLUMNS

1. SPECIAL CONFINING REINFORCEMENTS SHALL BE PROVIDED OVER A LENGTH 'Lo' FROM EACH JOINT FACE, TOWARDS MID SPAN AND ON EITHER SIDE OF ANY SECTION WHERE FLEXURAL YIELDING MAY OCCUR UNDER THE EFFECT OF EARTHQUAKE FORCES. THE LENGTH 'Lo' SHALL NOT BE LESS THAN a) LARGER LATERAL DIMENSION OF THE MEMBER AT THE SECTION WHERE YIELDING OCCURS, b) 1/6 OF THE CLEAR SPAN OF THE MEMBER c) 450mm. THE SPACING OF HOOPS USED AS SPECIAL CONFINING STEEL SHALL NOT EXCEED 1/4 OF MINIMUM MEMBER DIMENSION BUT NEED NOT BE LESS THAN 75mm NOR MORE THAN 100mm.
2. THE SPACING OF HOOPS WITHIN 'Hc-2Lo' SHALL NOT EXCEED HALF THE LEAST LATERAL DIMENSION OF THE COLUMN, EXCEPT WHERE SPECIAL CONFINING REINFORCEMENTS IS PROVIDED FOR SPLICE.
3. LAP SPLICE SHALL BE PROVIDED ONLY IN THE CENTRAL HALF OF THE MEMBER LENGTH. HOOPS SHALL BE PROVIDED OVER THE ENTIRE SPLICE LENGTH AT A SPACING NOT MORE THAN 150mm C/C. NOT MORE THAN 50% OF THE BARS SHALL BE SPLICED AT ONE SECTION.
4. A JOINT WHICH HAS BEAM FRAMING INTO ONE/TWO SIDES SHALL BE PROVIDED WITH SPECIAL CONFINING STEEL WITH A SPACING EQUAL TO SL.NO. 1 WITHIN THE JOINT.
5. A JOINT WHICH HAS BEAMS FRAMING INTO ALL FOUR FACES SHALL BE PROVIDED WITH A SPACING DOUBLE THE SPECIAL CONFINING STEEL REQUIRED AT THE END OF THE COLUMN. THE SPACING OF THE HOOP WITHIN THE JOINT SHALL NOT EXCEED 150mm.
6. LAP LENGTH SHALL BE 69TIMES DIA OF LONGITUDINAL REINFORCEMENTS.



EXTENSION OF HOOP IN COLUMN & BEAM

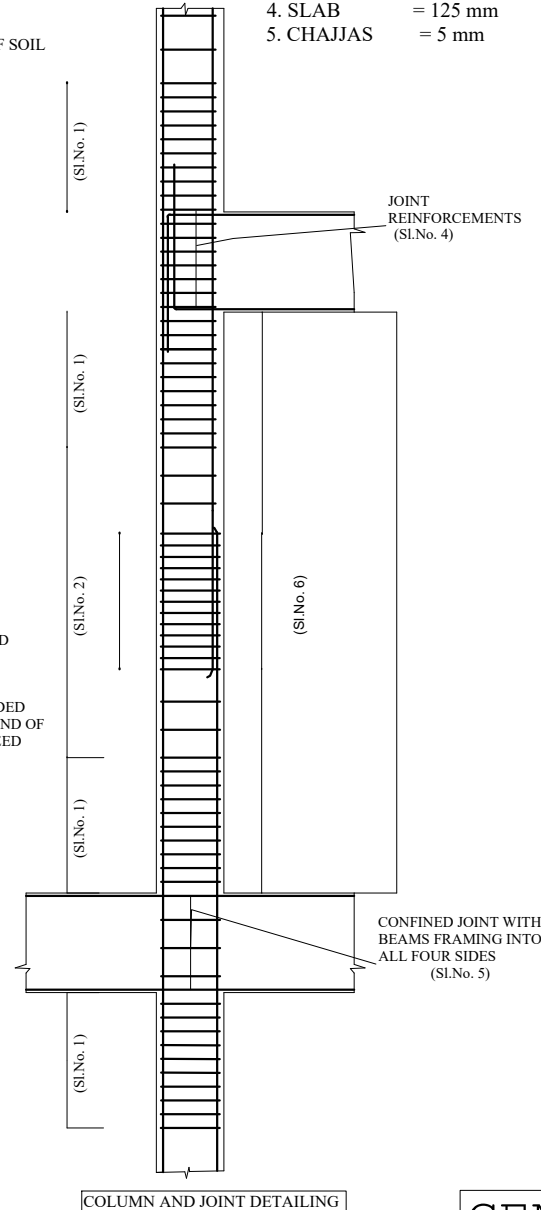
HOOP SHALL BE EXTENDED UPTO 10 TIMES DIA OF HOOP OR 75mm
WHICHEVER IS GREATER.

MATERIALS

1. CONCRETE GRADE = M20
2. STEEL = Fe415(conforming IS:1786)

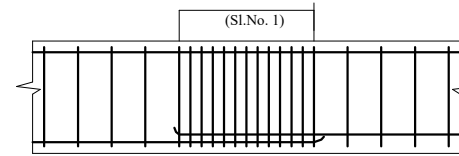
CLEAR COVERS

1. FOUNDATIONS = 50mm
2. COLUMNS = 30mm
3. BEAMS = 25mm
4. SLAB = 125 mm
5. CHAJJAS = 5 mm

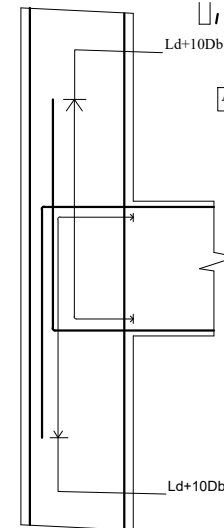


COLUMN AND JOINT DETAILING

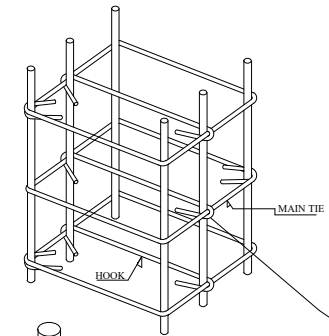
LAP SPLICE IN BEAM



Ld = DEVELOPMENT LENGTH IN TENSION
Db = BAR DIAMETER



ANCHORAGE OF BEAM BARS IN AN EXTERNAL JOINT



HOOK AND MAIN TIES
INTERLOCKING DETAILS :
HOOK SHOULD HOLD BOTH
MAIN REINFORCEMENTS &
MAIN TIES

3. BEAMS

1. THE LONGTUDINAL BARS IN BEAMS SHALL BE SPLICED, ONLY IF HOOPS ARE PROVIDED OVER THE ENTIRE SPLICE LENGTH AT A SPACING NOT EXCEEDING 150mm C/C.
 2. THE LAP LENGTH SHALL NOT BE LESS THAN THE DEVELOPMENT LENGTH 'Ld' IN TENSION AND SHALL BE TAKEN AS 69 TIMES DIA OF BAR.
 3. LAP SPLICE SHALL NOT BE PROVIDED a) WITHIN A JOINT, b) WITHIN A DISTANCE '2d' FROM THE JOINT FACE WHERE 'd' IS EFFECTIVE DEPTH OF BEAM, c) WITHIN A QUARTER LENGTH OF THE MEMBER WHERE FLEXURAL YIELDING MAY OCCUR UNDER EARTHQUAKE LOADS.
 4. NOT MORE THAN 50% OF THE BARS SHALL BE SPLICED AT ONE SECTION.
 5. ANCHORAGE LENGTH SHALL BE PROVIDED AS SHOWN IN THE FIGURE.
 6. THE FIRST STIRRUP SHALL START AT A DISTANCE OF 50mm FROM THE FACE OF THE COLUMN.
- ### 4. SLAB
1. CORNER MESHES SHALL BE AS SHOWN IN THE DRAWINGS.
 2. 8F @ 250c/c SHALL BE USED AS DISTRIBUTION BARS FOR TOP REINFORCEMENTS.(not shown in PLAN)

GENERAL NOTES ON DETAILINGS

PROJECT :

CONSTRUCTION OF
WAREHOUSE WITH
ASSOCIATED
INFRASTRUCTURE AT
SANGAU, LAWNGTLAI
DISTRICT

DRAWING :STRUCTURAL DRAWING

Sheet Title : FOOTING LAYOUT

1. FOUNDATION -
RCC ISOLATED FOOTING.
SUPER-STRUCTURE :
RCCFRAME STRUCTURE
2. FLOORING:
(a) RCC SLAB/ CEMENT
CONCRETE FLOORING
3. WALLS :HALF BRICK THICK
WITH PLASTERING
4. ROOFS:MS ROOF TRUSS
5. COURT YARD: CEMENT
CONCRETE FLOORING
6. RETAINING WALL: STONE
MASONRY REVELTMENT/
BREAST WALLS WITH -
DRAIN AT BASE

NOTE : ALL DIMENSIONS ARE IN MM

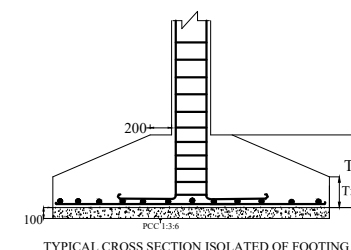
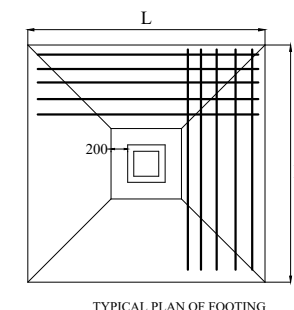
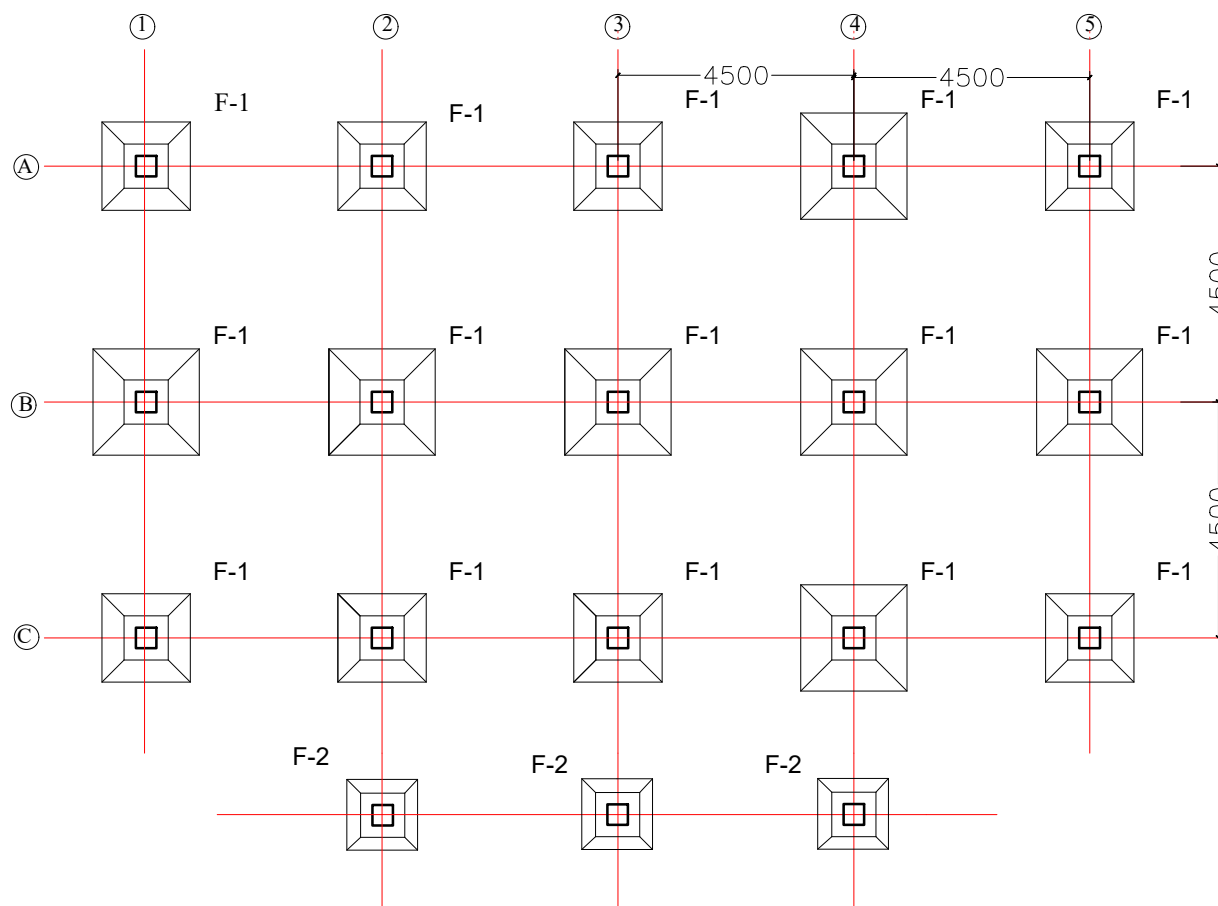
DATE : 15.10.2024

Scale : NTS

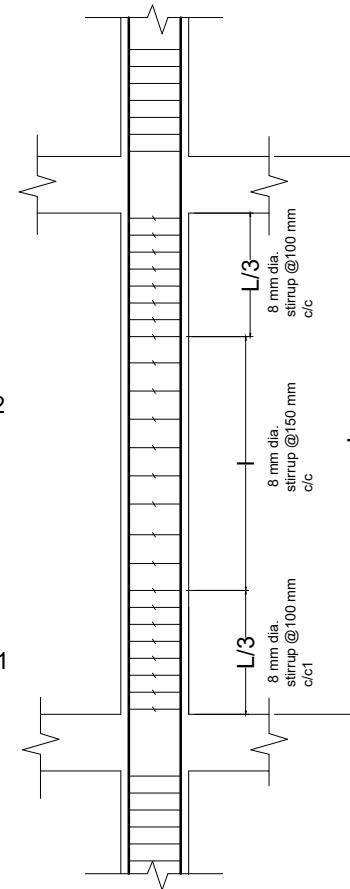
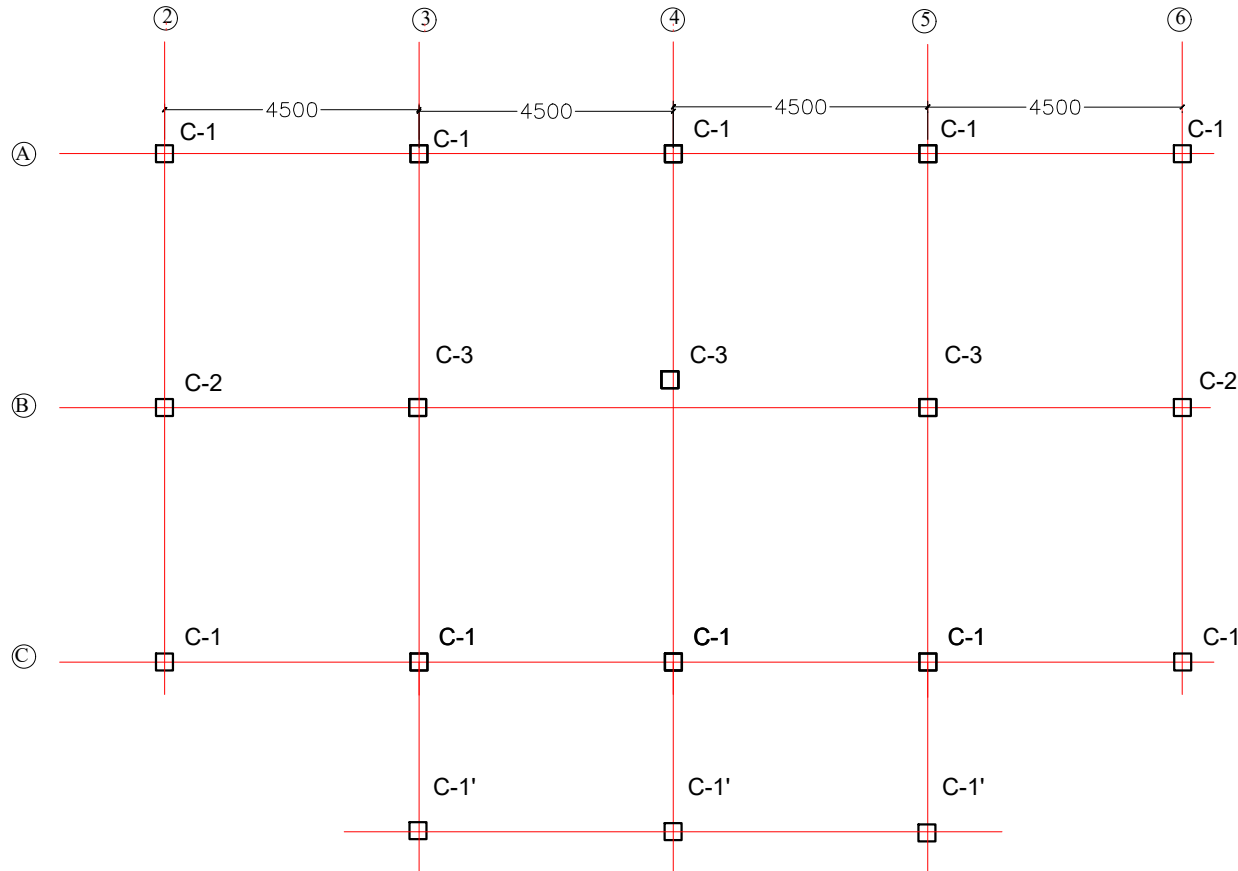
Sheet No : 2

PREPARED BY:

DEPARTMENT OF
AGRICULTURE
& FARMERS' WELFARE
GOVERNMENT OF MIZORAM



Footing Type	L X B (m)	Tf (mm)	Tt (mm)	Long Direction		Short Direction	
				Dia. d1	n1 nos	Dia. d2	n2 nos
F1	1800 x 1800	200	550	16 mm	10	16 mm	10
F2	1200 x 1200	200	550	16 mm	8	16 mm	8



PROJECT :

CONSTRUCTION OF
WAREHOUSE WITH
ASSOCIATED
INFRASTRUCTURE AT
SANGAU, LAWNGLAI
DISTRICT

DRAWING : STRUCTURAL DRAWING

Sheet Title : COLUMN DETAILS

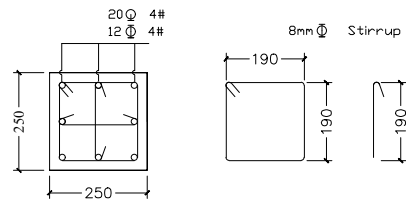
- FOUNDATION -
RCC ISOLATED FOOTING.
- SUPER-STRUCTURE :
RCCFRAME STRUCTURE
- FLOORING:
(a) RCC SLAB/ CEMENT
CONCRETE FLOORING
- WALLS :HALF BRICK THICK
WITH PLASTERING
- ROOFS:MS ROOF TRUSS
- COURT YARD: CEMENT
CONCRETE FLOORING
- RETAINING WALL: STONE
MASONRY REVETMENT/
BREAST WALLS WITH
DRAIN AT BASE

NOTE: ALL DIMENSIONS ARE IN MM

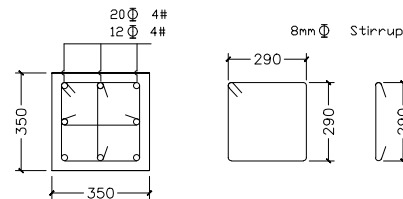
DATE : 15.10.2024	
Scale : NTS	
Sheet No : 3	

PREPARED BY:

DEPARTMENT OF
AGRICULTURE
& FARMERS' WELFARE
GOVERNMENT OF MIZORAM

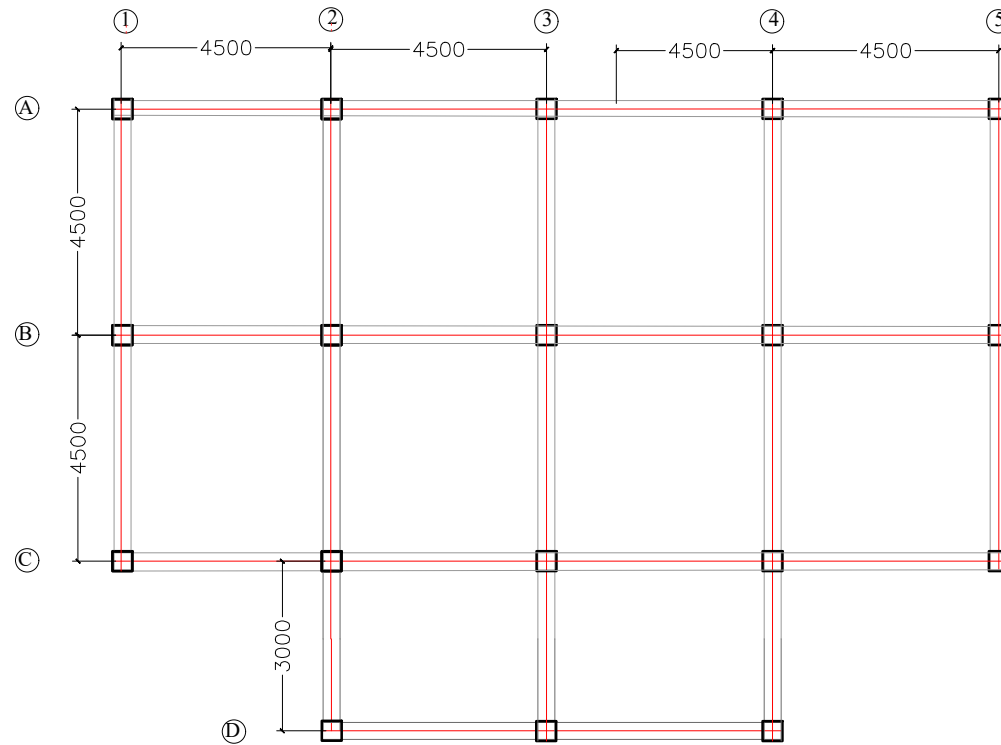


C-1' COLUMN

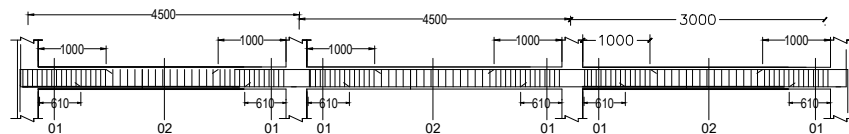


C-1, 2 & 3 COLUMN

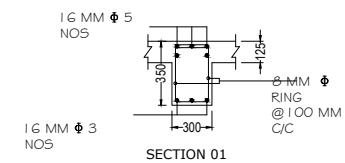
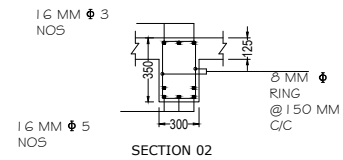
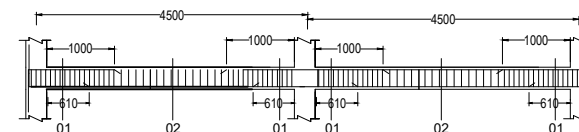
COLUMN HEIGHT:
1.C-1, C-2 & C-3=6500 mm
2.C-1'=4500 mm



BEAM DETAILS AT GRID 2,3 & 4



BEAM DETAILS AT GRID 1 & 5



PROJECT :

CONSTRUCTION OF
WAREHOUSE WITH
ASSOCIATED
INFRASTRUCTURE AT
SANGAU,
LAWNGTLAI
DISTRICT

DRAWING : STRUCTURAL DRAWING

Sheet Title : LAYOUT & SECTION OF
ALL BEAMS

1. FOUNDATION -
RCC ISOLATED FOOTING.
SUPER-STRUCTURE :
RCCFRAME STRUCTURE
2. FLOORING:
(a) RCC SLAB/ CEMENT
CONCRETE FLOORING
3. WALLS :HALF BRICK THICK
WITH PLASTERING
4. ROOFS:MS ROOF TRUSS
5. COURT YARD: CEMENT
CONCRETE FLOORING
6. RETAINING WALL: STONE
MASONRY REVETMENT/
BREAST WALLS WITH
DRAIN AT BASE

NOTE: ALL DIMENSIONS ARE IN MM

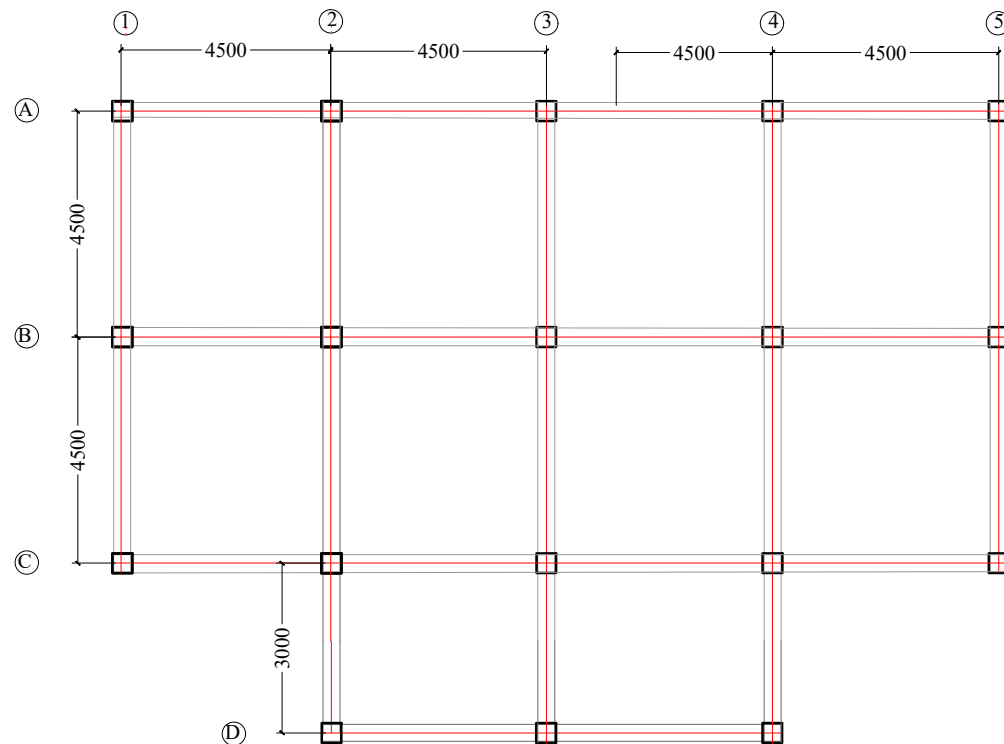
DATE : 15.10.2024

Scale : NTS

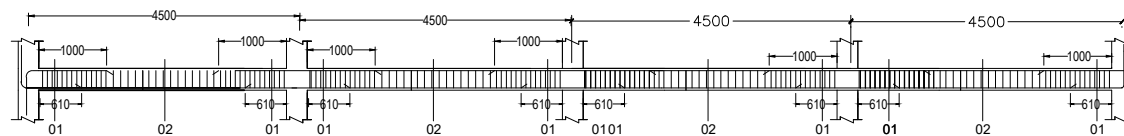
Sheet No : 4

PREPARED BY:

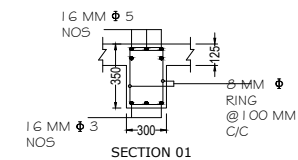
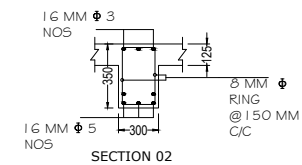
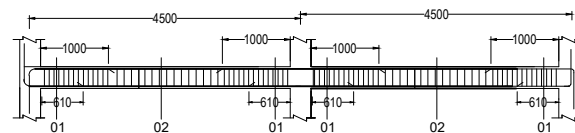
DEPARTMENT OF
AGRICULTURE
& FARMERS' WELFARE
GOVERNMENT OF MIZORAM



BEAM DETAILS AT GRID A, B & C



BEAM DETAILS AT GRID D



PROJECT :

CONSTRUCTION OF
WAREHOUSE WITH
ASSOCIATED
INFRASTRUCTURE AT
SANGAU, LAWNGTLAI
DISTRICT

DRAWING : STRUCTURAL DRAWING

Sheet Title : LAYOUT & SECTION OF
ALL BEAMS

1. FOUNDATION -
RCC ISOLATED FOOTING.
SUPER-STRUCTURE :
RCCFRAME STRUCTURE
2. FLOORING:
(a) RCC SLAB/ CEMENT
CONCRETE FLOORING
3. WALLS :HALF BRICK THICK
WITH PLASTERING
4. ROOFS:MS ROOF TRUSS
5. COURT YARD: CEMENT
CONCRETE FLOORING
6. RETAINING WALL: STONE
MASONRY REVETMENT/
BREAST WALLS WITH
DRAIN AT BASE

NOTE: ALL DIMENSIONS ARE IN MM

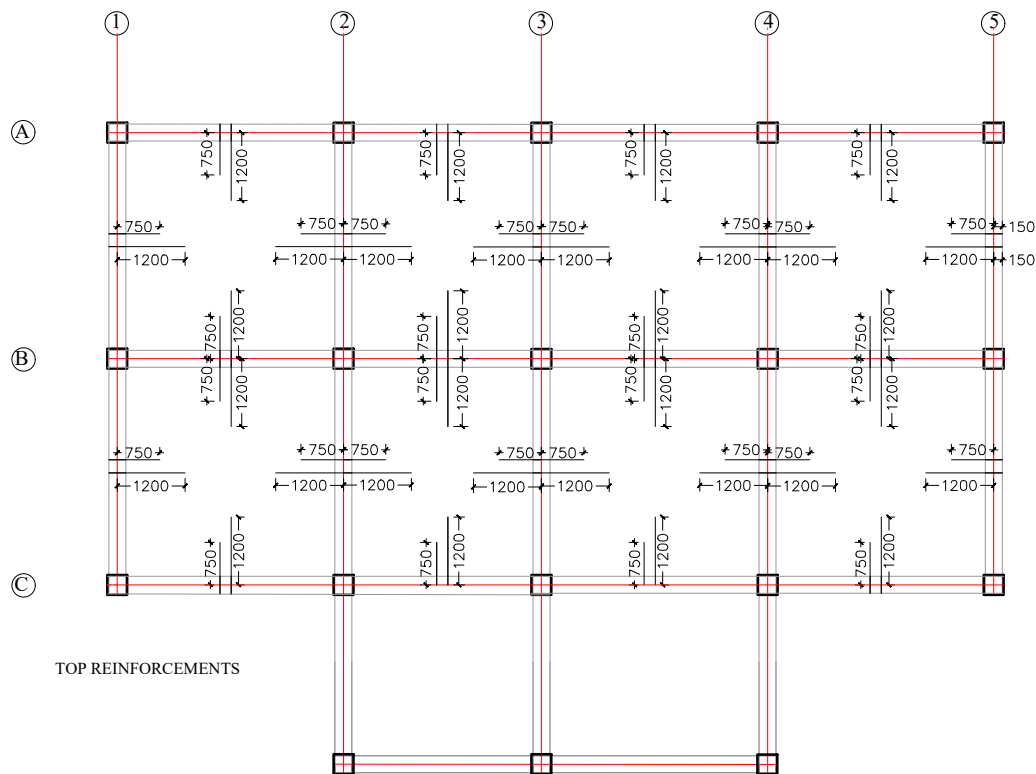
DATE : 15.10.2024

Scale : NTS

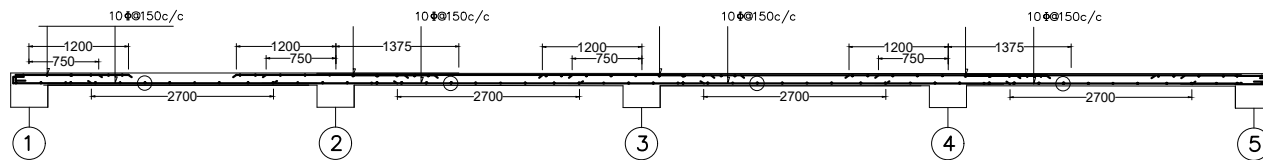
Sheet No : 5

PREPARED BY:

DEPARTMENT OF
AGRICULTURE & FARMERS'
WELFARE
GOVERNMENT OF MIZORAM



TOP REINFORCEMENTS



Slab thickness 125 mm

PROJECT :

CONSTRUCTION OF
WAREHOUSE WITH
ASSOCIATED
INFRASTRUCTURE AT
SANGAU, LAWNGTLAI
DISTRICT

DRAWING : STRUCTURAL DRAWING

Sheet Title : LAYOUT & SECTION OF
FLOOR SLAB

1. FOUNDATION -
RCC ISOLATED FOOTING.
SUPER-STRUCTURE :
RCCFRAME STRUCTURE
2. FLOORING:
(a) RCC SLAB/ CEMENT
CONCRETE FLOORING
3. WALLS :HALF BRICK THICK
WITH PLASTERING
4. ROOFS:MS ROOF TRUSS
5. COURT YARD: CEMENT
CONCRETE FLOORING
6. RETAINING WALL: STONE
MASONRY REVETMENT/
BREAST WALLS WITH
DRAIN AT BASE

NOTE: ALL DIMENSIONS ARE IN MM

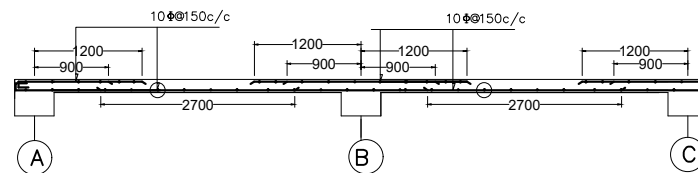
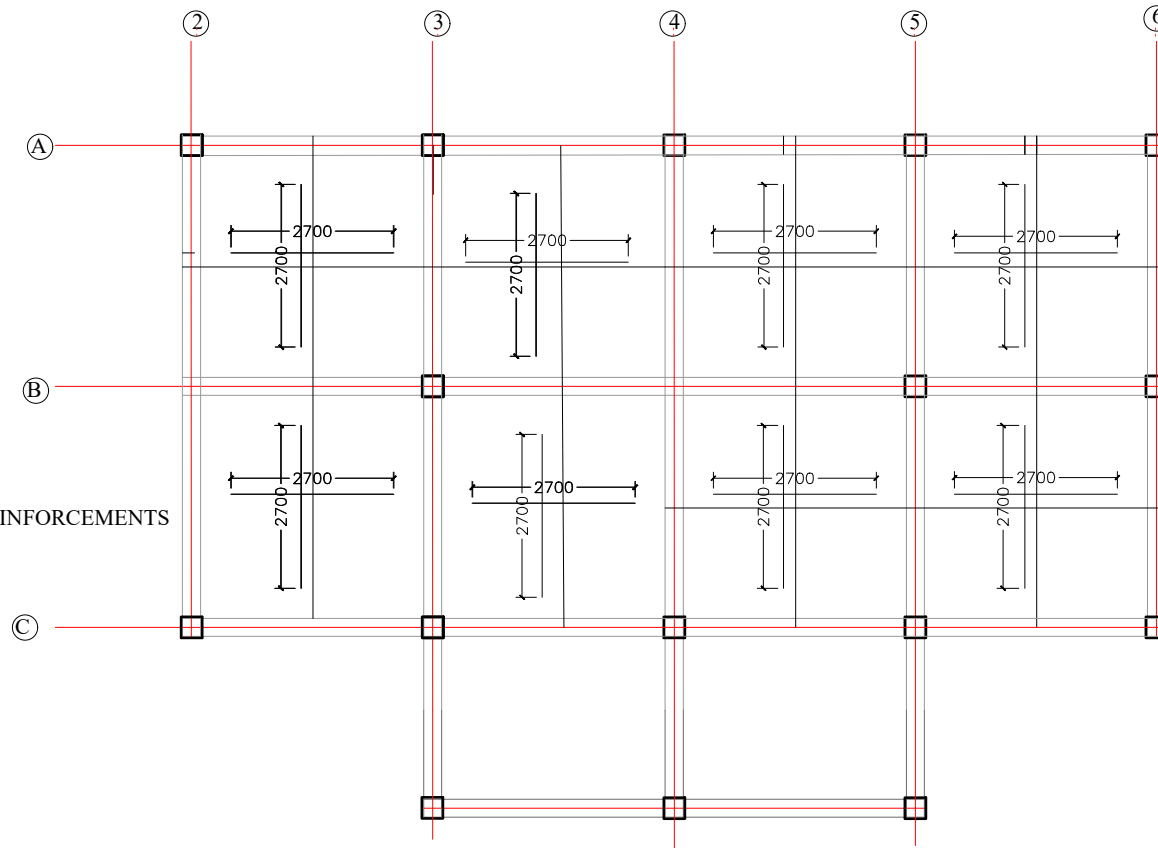
DATE : 15.10.2024

Scale : NTS

Sheet No : 6

PREPARED BY:

DEPARTMENT OF
AGRICULTURE & FARMERS'
WELFARE
GOVERNMENT OF MIZORAM



Slab thickness 125 mm

PROJECT :

CONSTRUCTION OF
WAREHOUSE WITH
ASSOCIATED
INFRASTRUCTURE AT
SANGAU, LAWNGTLAI
DISTRICT

DRAWING : STRUCTURAL DRAWING

Sheet Title : LAYOUT & SECTION OF
FLOOR SLAB

1. FOUNDATION -
RCC ISOLATED FOOTING.
SUPER-STRUCTURE :
RCCFRAME STRUCTURE
2. FLOORING:
(a) RCC SLAB/ CEMENT
CONCRETE FLOORING
3. WALLS :HALF BRICK THICK
WITH PLASTERING
4. ROOFS:MS ROOF TRUSS
5. COURT YARD: CEMENT
CONCRETE FLOORING
6. RETAINING WALL: STONE
MASONRY REVETMENT/
BREAST WALLS WITH -
DRAIN AT BASE

NOTE: ALL DIMENSIONS ARE IN MM

DATE : 15.10.2024

Scale : NTS

Sheet No : 7

PREPARED BY:

DEPARTMENT OF
AGRICULTURE & FARMERS'
WELFARE
GOVERNMENT OF MIZORAM